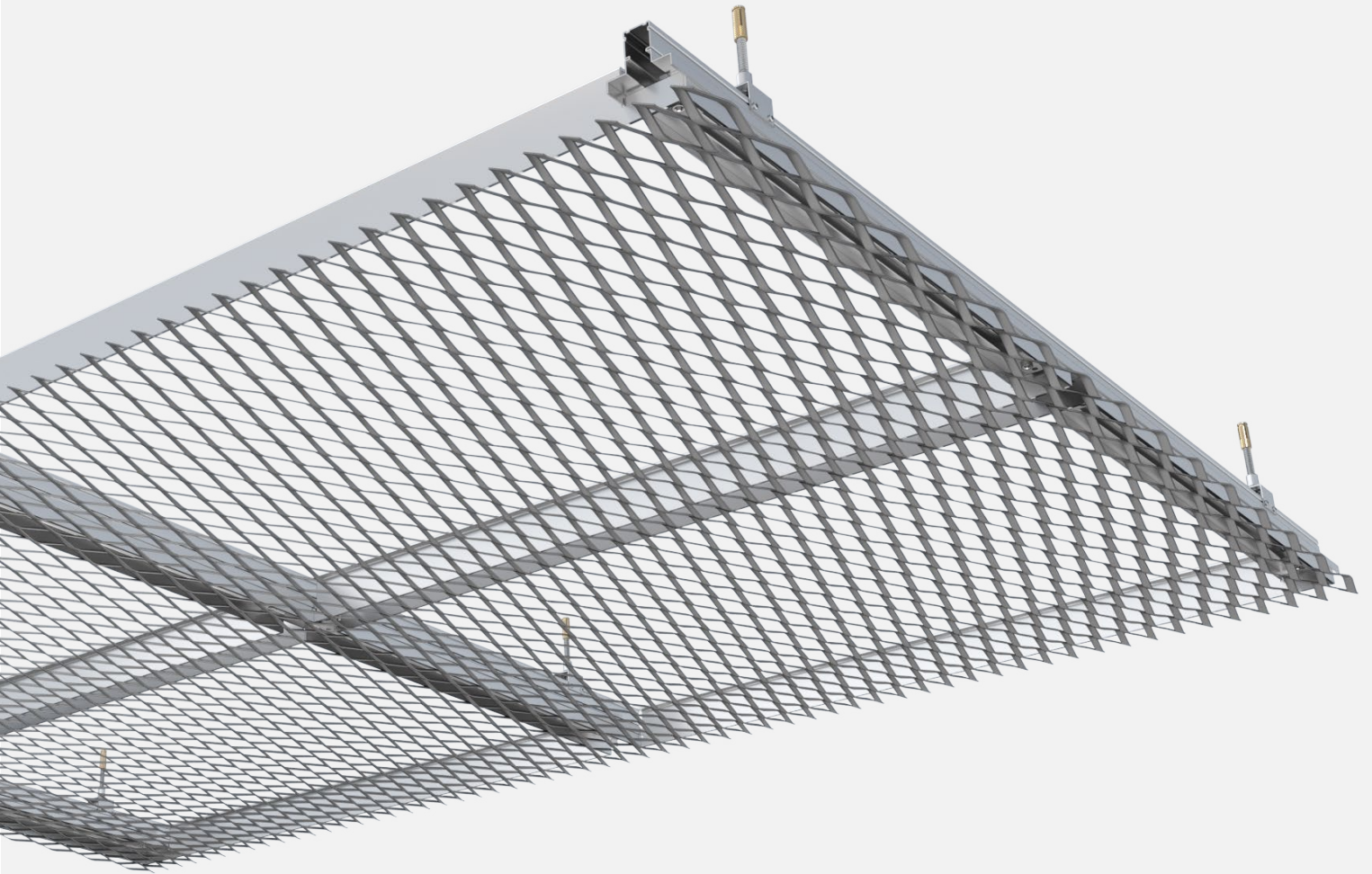




**PROGRESS
ARCHITECTURE**

PROTWIST-C

Mounting system for ceiling panels
from expanded metal mesh



**Bespoke
design**



**Indoor
& outdoor**



Eco-friendly



**Vertical and
diagonal panels**



**Installation
at any angle**



**No visible
divisions**



Vandal-resistant



**A1 - A2 fire
classification**



Quick access



Minimal depth

■ PROTWIST-C

MOUNTING SYSTEM FOR EXPANDED METAL MESH



DESCRIPTION

The "C" variant of the PROTWIST system is designed for the installation of ceiling and wall claddings made of expanded metal mesh with the strand exceeding 2,5mm. The mesh is formatted by cutting and then welded around the perimeter to a special frame. The panels are attached to a dedicated "W" support profile using a special half-circle pivot element. Removal of individual panels does not cause the remaining panels to move. In the PROTWIST-C variant, the assembled mesh panels continue the mesh pattern and form a uniform surface without visible divisions.

GUIDELINES

The panel dimensions are multiples of the expanded metal mesh pitch. The aluminum support profile is fixed with a clip on a steel threaded rod and anchored in the support layer with a brass stud. The ceiling substructure is composed of a single-level support grid in a parallel arrangement. The grid is suspended from the ceiling by slings.

TECHNICAL PARAMETERS

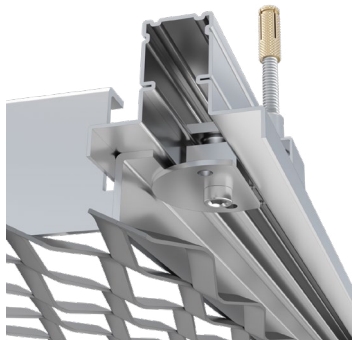
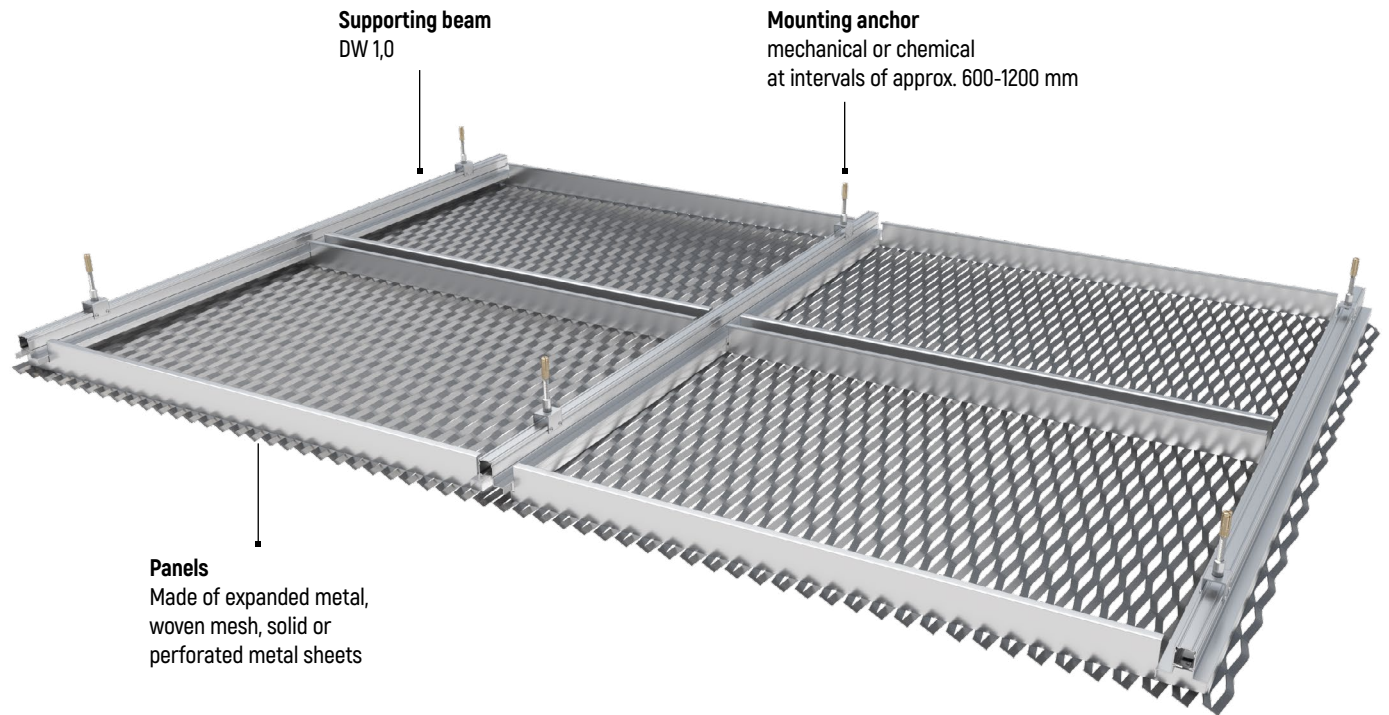
Max. panel width:	1 500 mm
Max. panel length:	3 000 mm
Infill type:	expanded metal mesh
Infill material:	aluminium
Frame:	aluminium
Surface finishing:	powder coating

APPLICATIONS

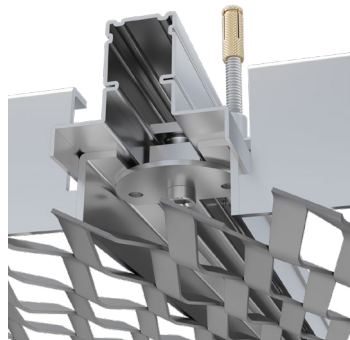
Interior suspended ceilings
Exterior suspended ceilings

■ PROTWIST-C

MOUNTING SYSTEM FOR EXPANDED METAL MESH



mesh panels formatted by cutting



mesh panels with hidden substructure

RECOMMENDED MESH MODELS

EXPANDED METAL MESH

GALLA C025010025

GALLA C030013035

GALLA C050019040

GALLA C063025090

GALLA C100035125



FOLLOW US

