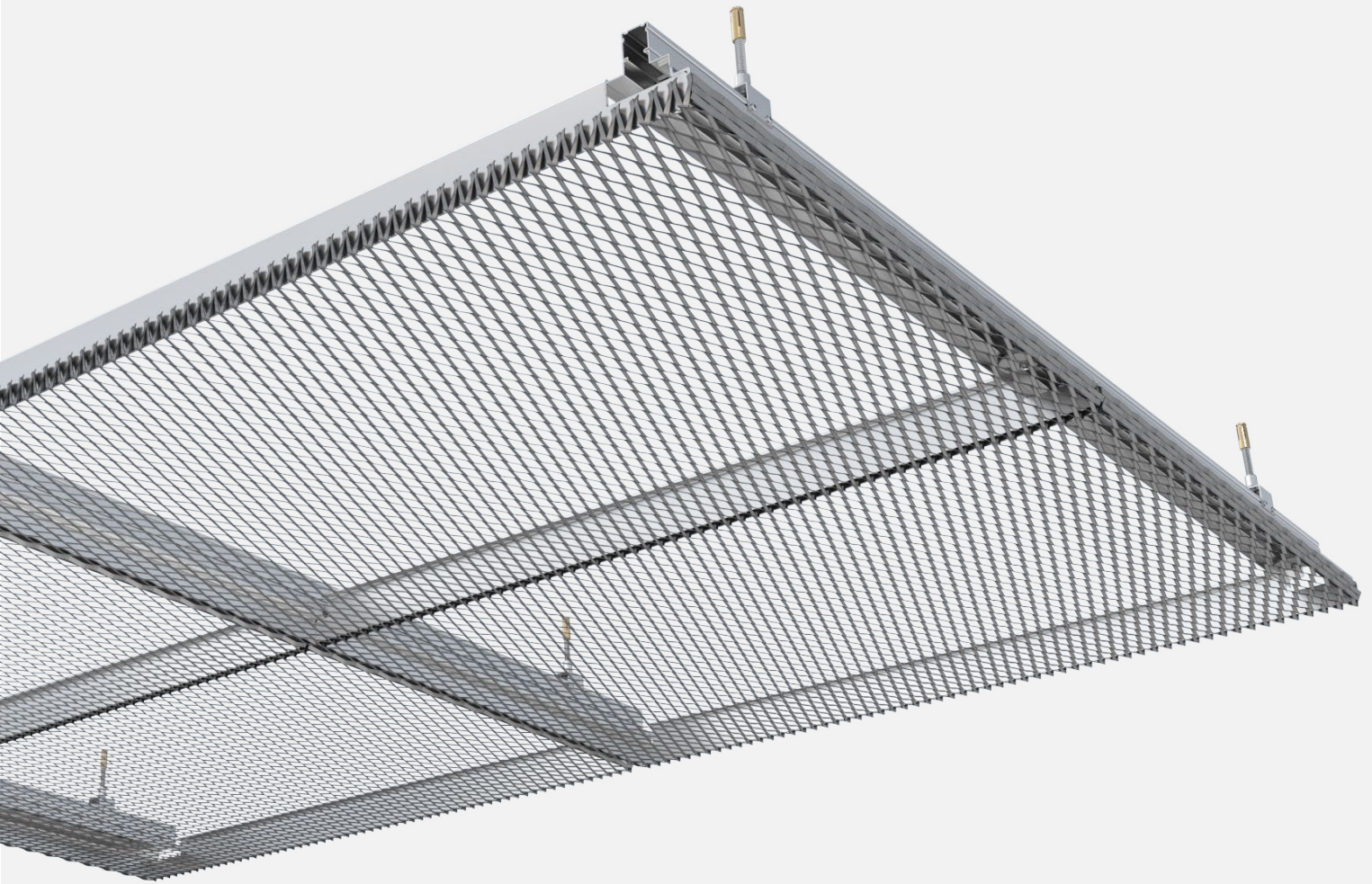




**PROGRESS
ARCHITECTURE**

PROTWIST-B

Mounting system for ceiling panels
from expanded metal mesh and woven mesh



**Bespoke
design**



**Indoor
& outdoor**



Eco-friendly



**Vertical and
diagonal panels**



**Installation
at any angle**



**Hidden
substructure**



Vandal-resistant



**A1 - A2 fire
classification**



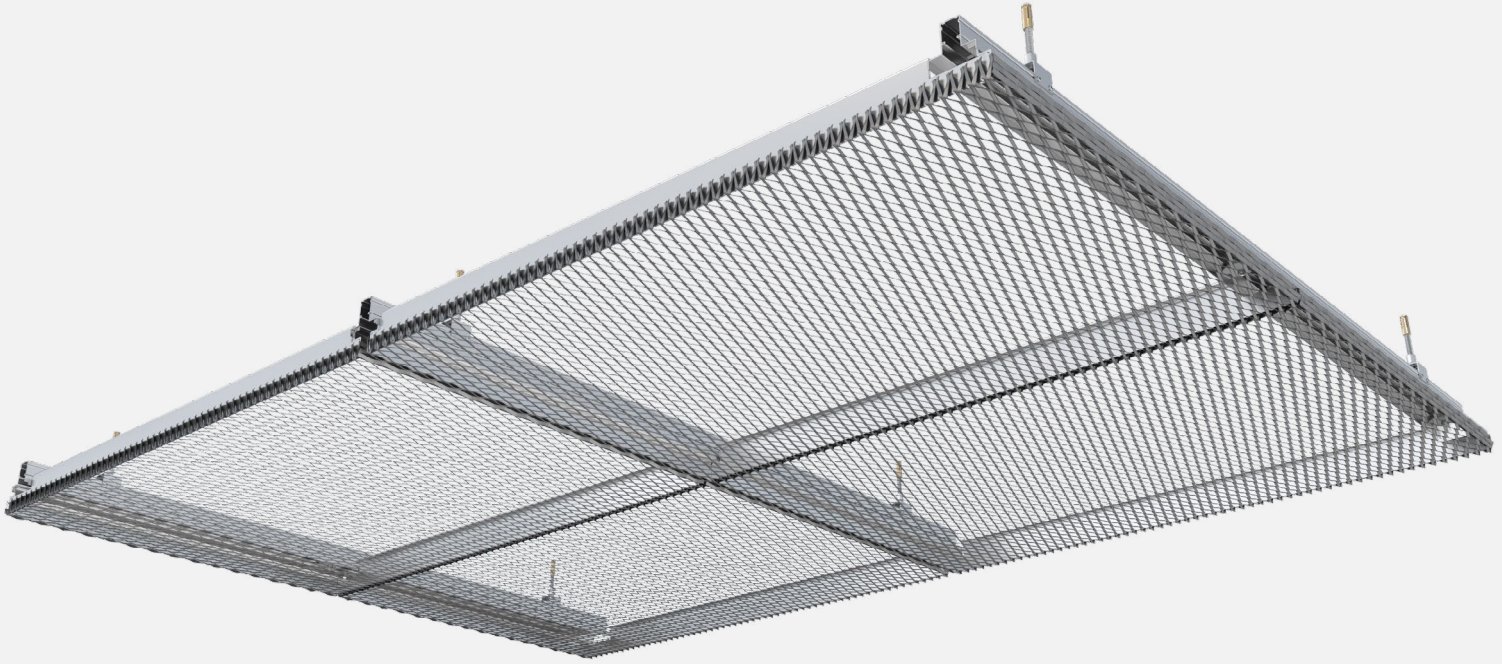
Quick access



Minimal depth

■ PROTWIST-B

MOUNTING SYSTEM FOR EXPANDED METAL MESH AND WOVEN MESH



DESCRIPTION

The "B" variant of the PROTWIST system is designed for the installation of ceiling and wall claddings made of solid or perforated metal panels, woven mesh and expanded metal mesh with the strand below 3.5mm. The mesh is formatted by cutting and bending, and then welded around the perimeter to a special frame. The panels are attached to a dedicated "W" support profile using a special half-circle pivot element. Removal of individual panels does not cause the remaining panels to move. In the PROTWIST-B variant, the assembled mesh panels form a uniform surface with visible divisions.

GUIDELINES

The ceiling substructure consists of a single-level supporting grid in a parallel configuration. The grid is suspended to the ceiling with slings.

TECHNICAL PARAMETERS

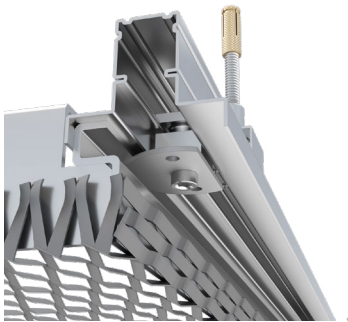
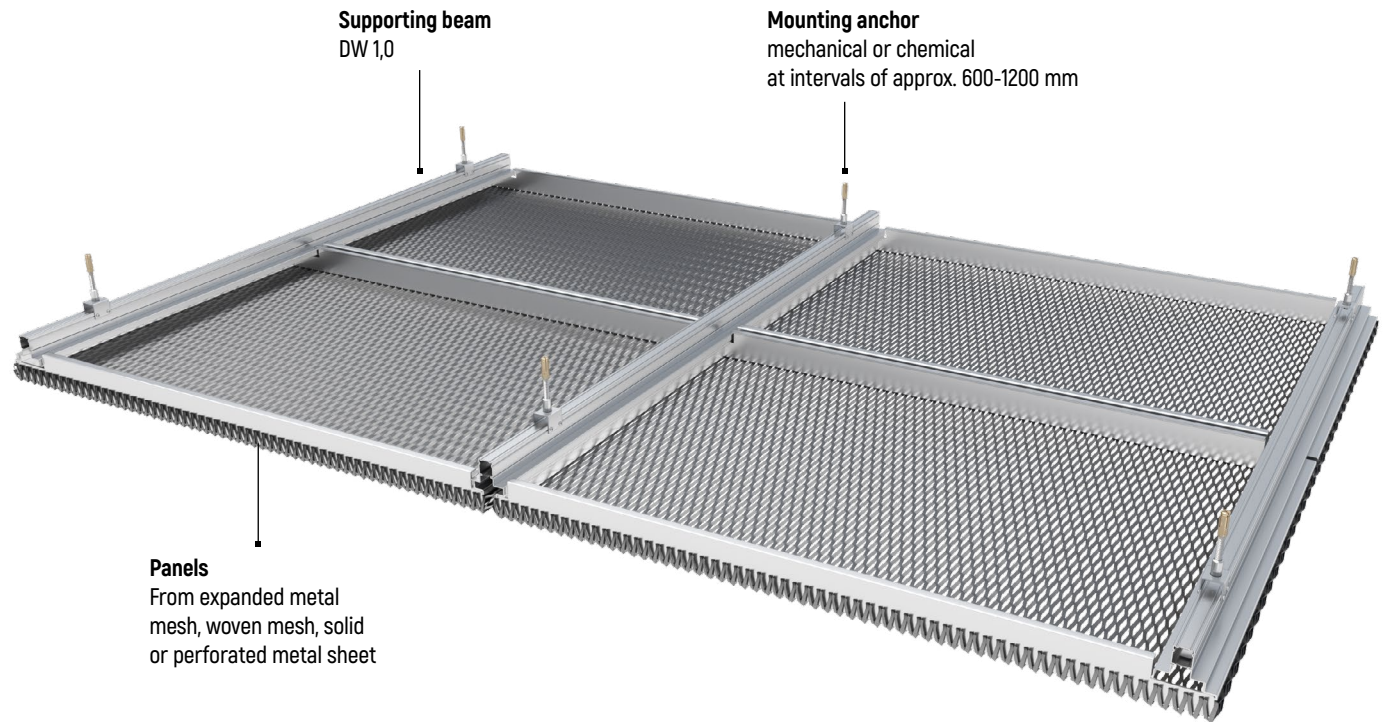
Max. panel width:	1 500 mm
Max. panel length:	3 000 mm
Infill type:	expanded metal mesh, woven mesh
Infill material:	aluminium
Frame:	aluminium
Surface finishing:	powder coating

APPLICATIONS

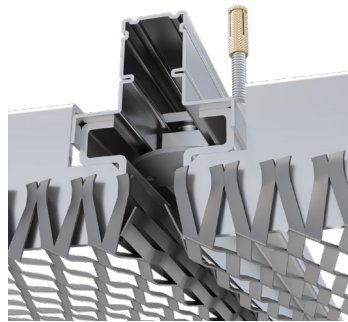
Interior suspended ceilings
Exterior suspended ceilings

■ PROTWIST-B

MOUNTING SYSTEM FOR EXPANDED METAL MESH AND WOVEN MESH



mesh panels formatted by cutting
and bending



mesh panels with hidden substructure

RECOMMENDED MESH MODELS

EXPANDED METAL MESH

GALLA C020008025

GALLA C030013035

GALLA C043017025

GALLA C050029030

WOVEN WIRE MESH

VIRGO P07020

LEO P06030



FOLLOW US

