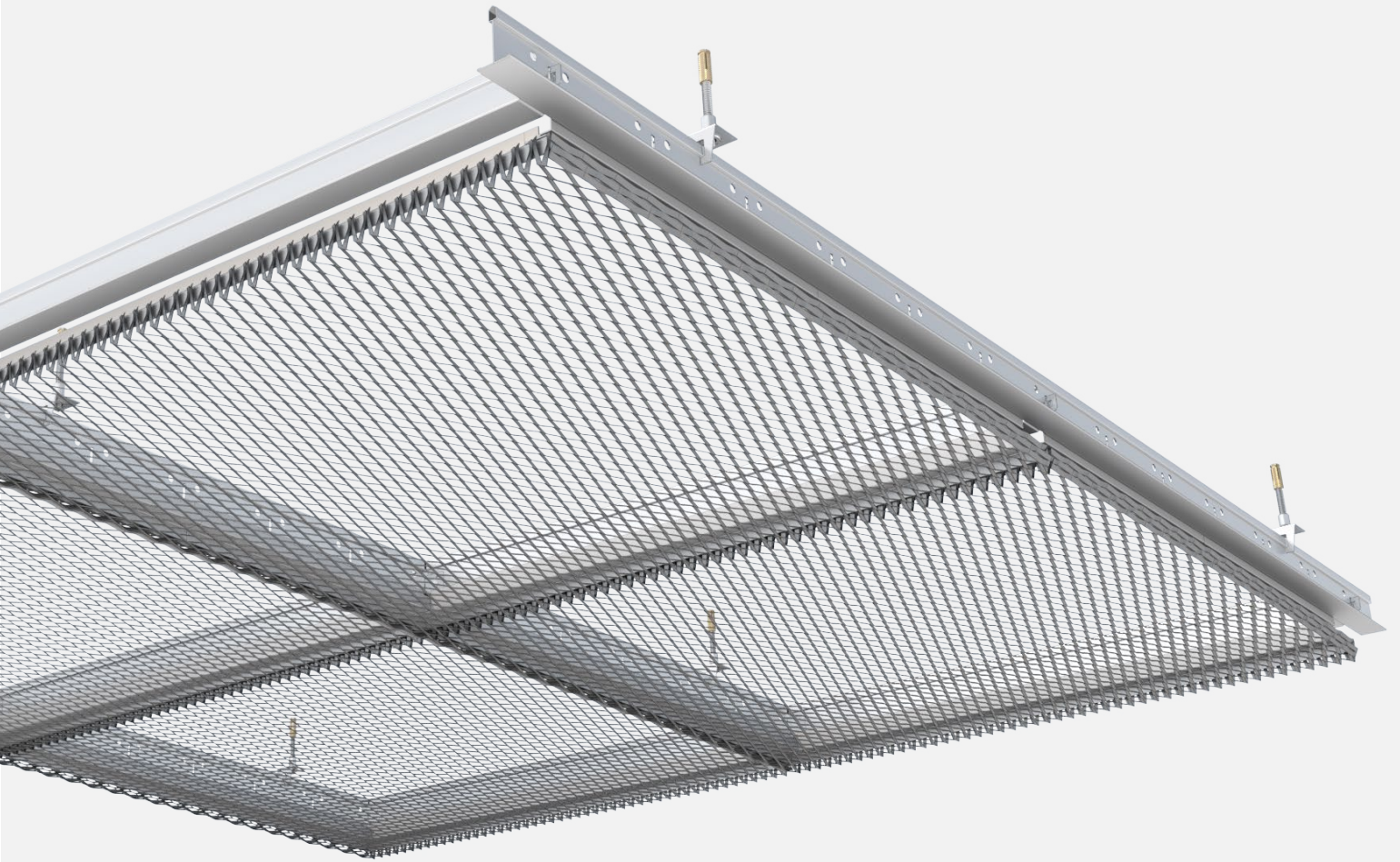




**PROGRESS
ARCHITECTURE**

PROT24-BI

Mounting system for ceiling panels
from expanded metal mesh



Bespoke
design



Spatial
effect



Building
redevelopment



Eco-friendly



Hidden
substructure



A1 - A2 fire
classification



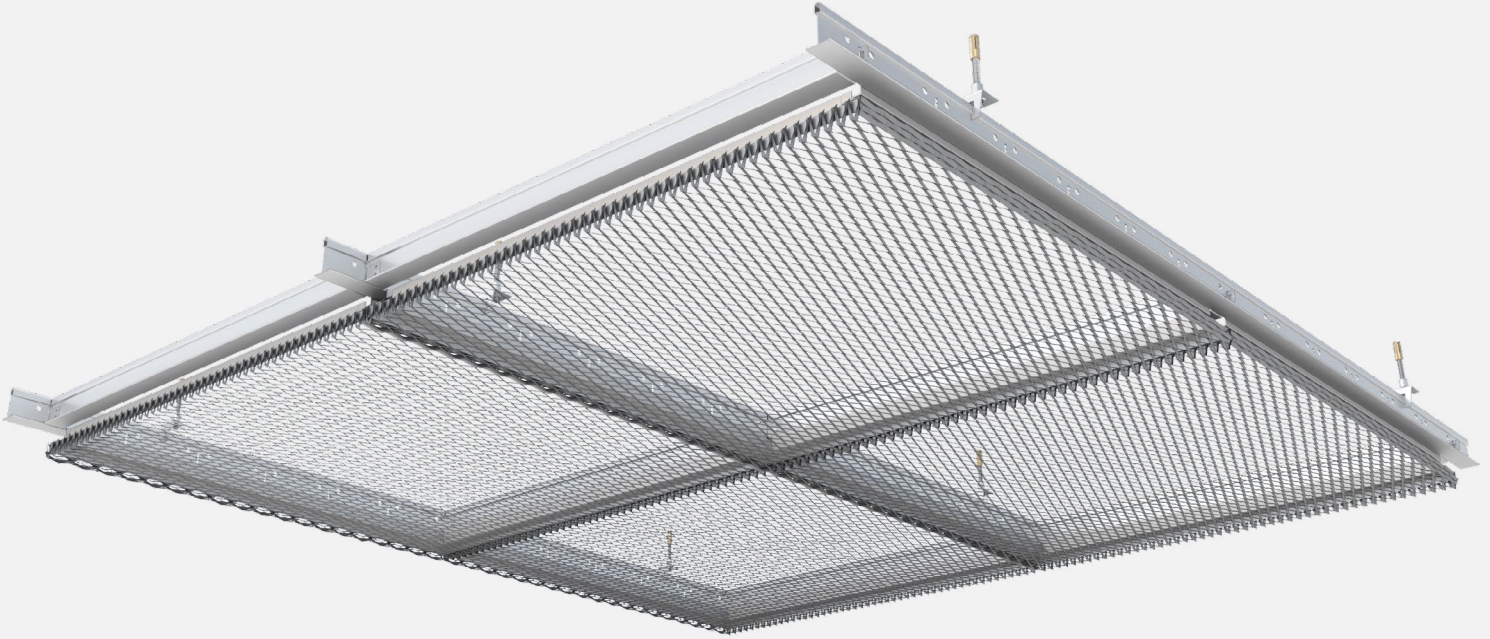
Quick access



Minimal depth

■ PROT24-BI

MOUNTING SYSTEM FOR EXPANDED METAL MESH



DESCRIPTION

The "BI" variant of the PROT24 system is designed for the installation of expanded metal ceiling panels with a strand below 3,5mm. The mesh is formatted by cutting and bending, and then welded around the perimeter of a special frame. Two opposite edges of the panel are supported by T24 support profiles. The installed panel covers the entire substructure, which remains invisible. Removal of individual panels does not cause the remaining panels to move. In the PROT24-BI variant, the assembled mesh panels continue the mesh pattern and form a uniform surface without visible divisions.

GUIDELINES

The ceiling substructure is composed of a single-level cross-bearing grid. The grid is suspended to the ceiling with slings. The offer includes ceiling infill panels adapted to the T24 substructure.

TECHNICAL PARAMETERS

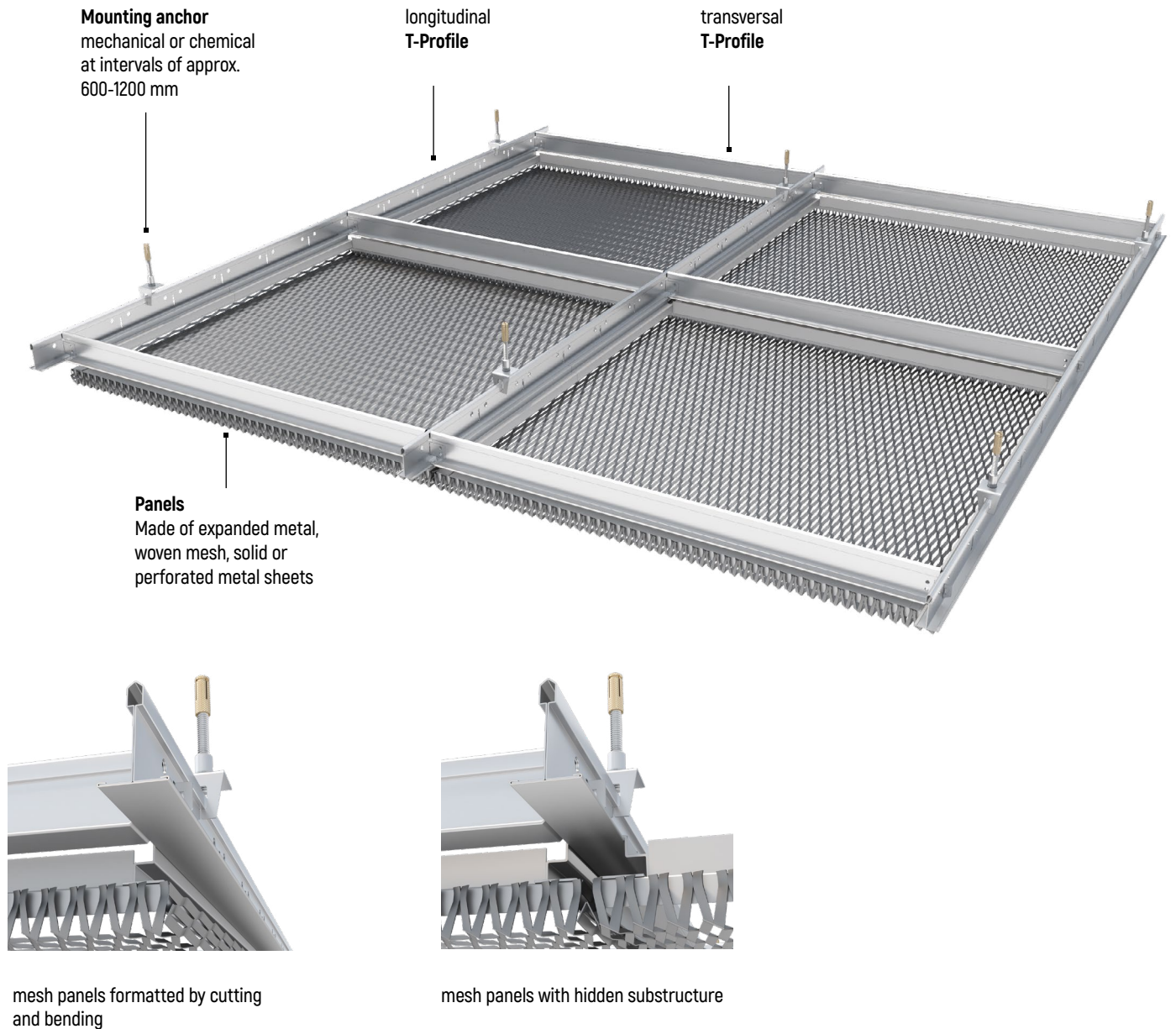
Max. panel width:	1 200 mm
Max. panel length:	1 200 mm
Infill type:	expanded metal mesh
Infill material:	aluminium
Frame:	aluminium
Surface finishing:	powder coating

APPLICATIONS

Interior suspended ceilings

■ PROT24-BI

MOUNTING SYSTEM FOR EXPANDED METAL MESH



RECOMMENDED MESH MODELS

EXPANDED METAL MESH

GALLA C020008025

GALLA C030013035

GALLA C043017025

GALLA C050029030



FOLLOW US

