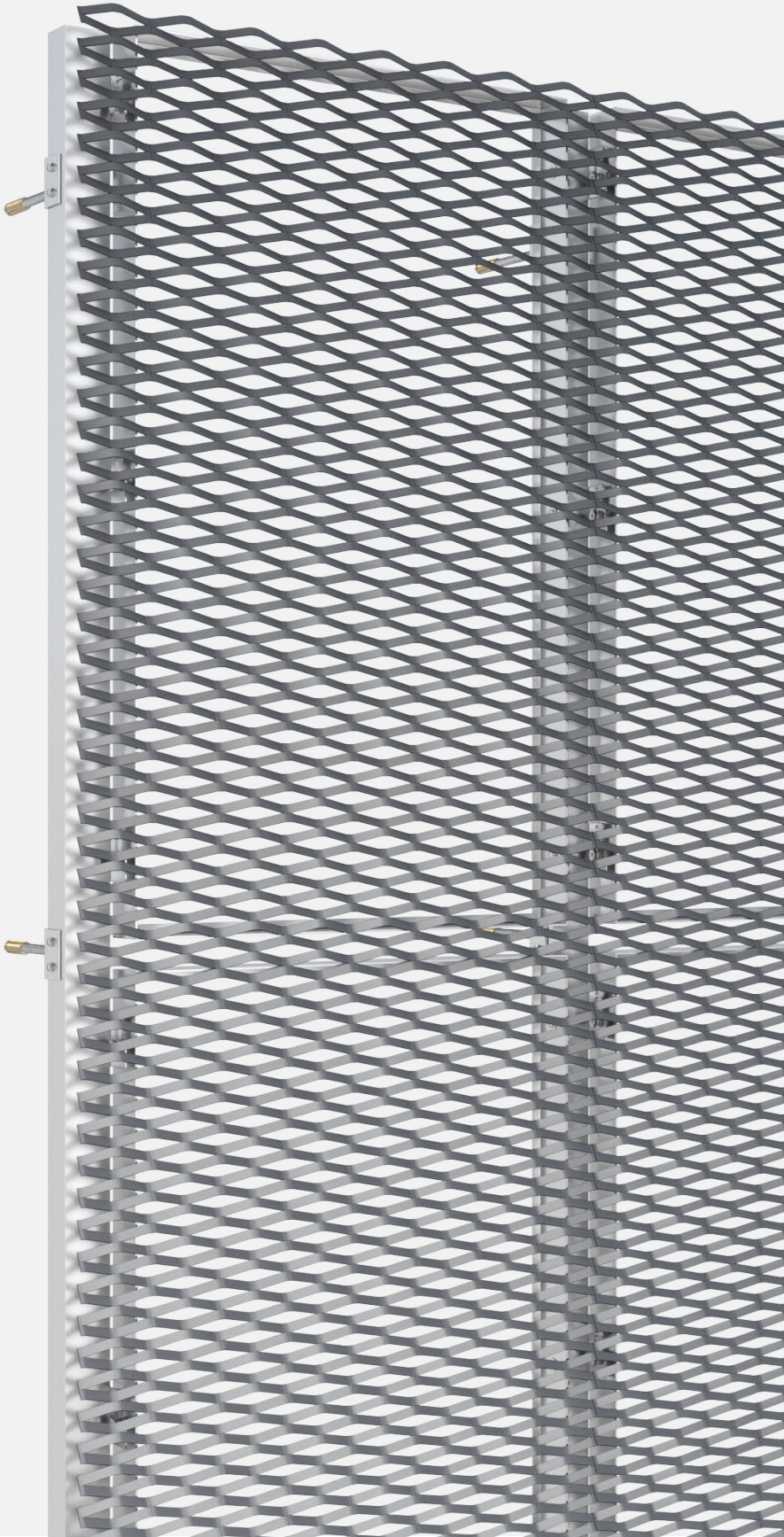




**PROGRESS  
ARCHITECTURE**

# PROSLIDE-C

Mounting system for facades and wall claddings  
from expanded metal mesh



**Bespoke  
design**



**Spatial  
effect**



**Free  
ventilation**



**Building  
redevelopment**



**Indoor  
& outdoor**



**Durability  
& resistance**



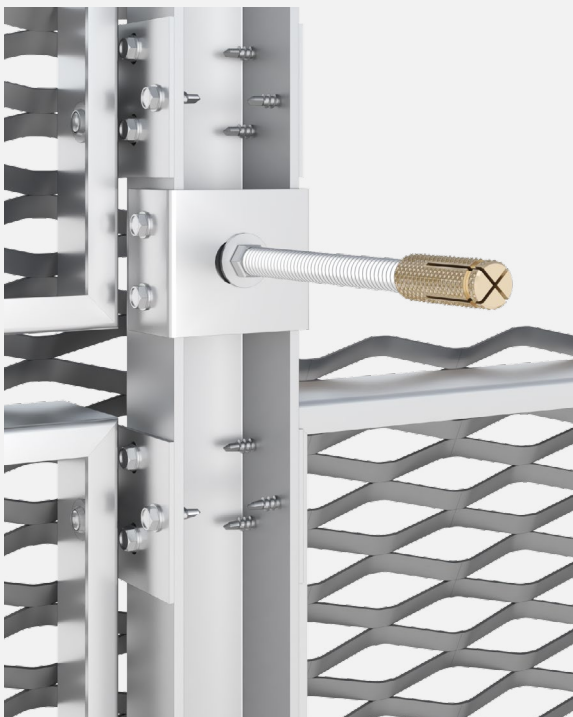
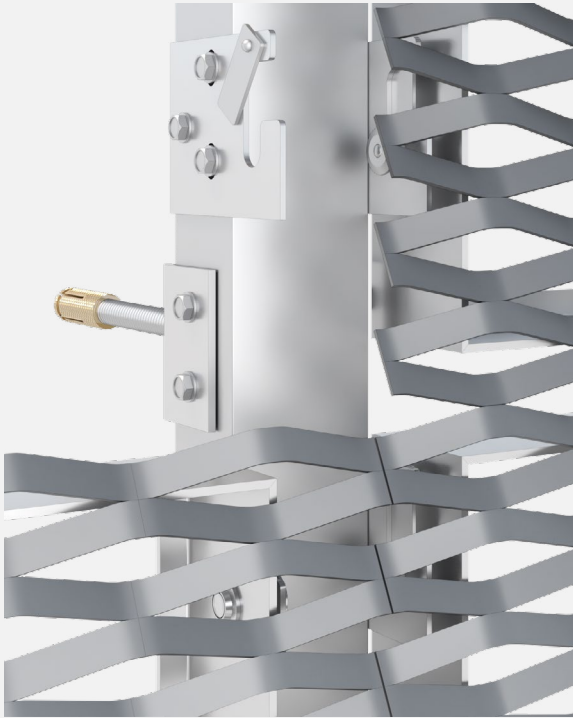
**Low  
maintenance**



**Eco-friendly**

# PROSLIDE-C

MOUNTING SYSTEM FOR EXPANDED METAL MESH



## DESCRIPTION

The "C" variant of the PROSLIDE system is designed for the installation of facade and wall claddings made of woven mesh, welded grid, and expanded metal mesh with the strand exceeding 2,5mm. The mesh is formatted by cutting, and then welded around the perimeter to a special frame. The panel with special clips slides into the mounting brackets, and a movable lock prevents it from slipping out. Innovative mounting of "C" section support profile with threaded rods replaces traditional consoles and allows installation after insulation. In the PROSLIDE-C variant, the assembled mesh panels continue the mesh pattern and form a uniform surface without visible divisions.

## APPLICATIONS

- Metal facades
- Wall claddings
- Roof equipment covers

## TECHNICAL PARAMETERS

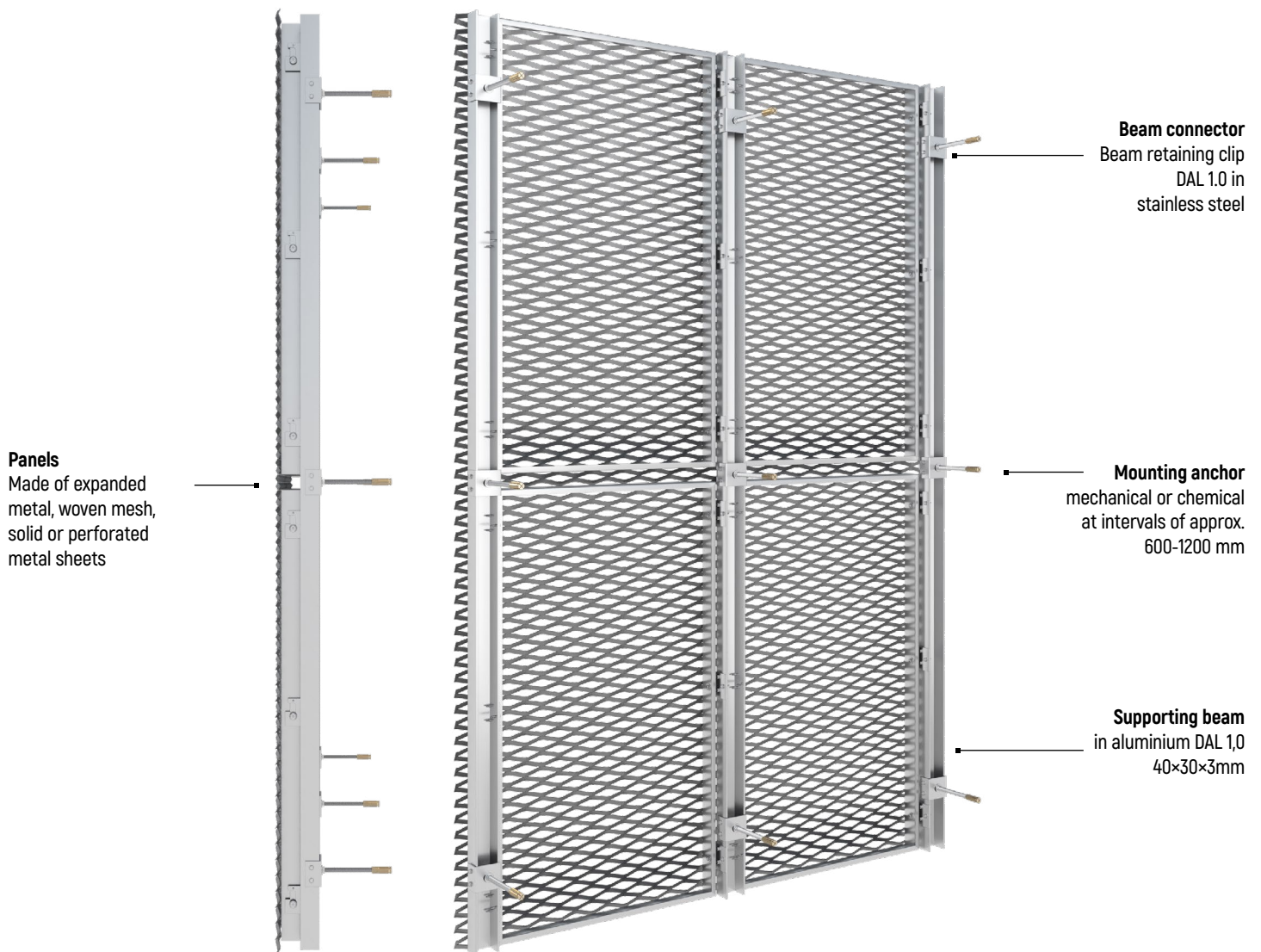
Max. panel width:	1 500 mm
Max. panel length:	3 000 m
Infill type:	expanded metal mesh
Infill material:	aluminium
Frame:	aluminium
Surface finishing:	powder coating

## GUIDELINES

The panel dimensions are multiples of the expanded metal mesh. Installation of the panels begins from the bottom to the top rows, and removal in reverse order. The aluminum C section supporting profile, is attached with a clip on a steel threaded rod and anchored to the support layer with a brass stud.

# PROSLIDE-C

MOUNTING SYSTEM FOR EXPANDED METAL MESH



## RECOMMENDED MESH MODELS

### EXPANDED METAL MESH

GALLA C063025090

GALLA C100035125

GALLA C125040145

GALLA C150050180

GALLA C200060020



FOLLOW US

