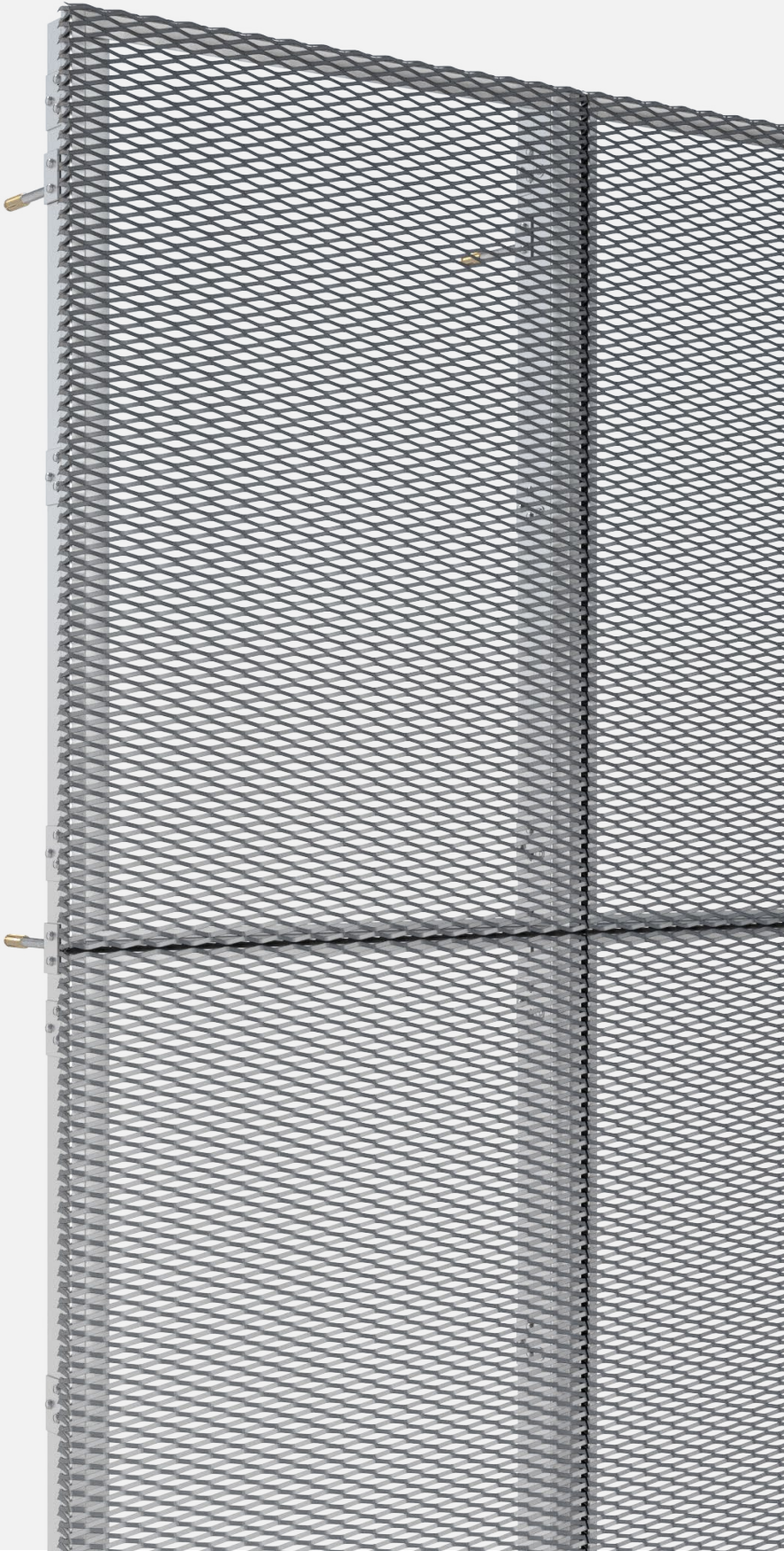




**PROGRESS
ARCHITECTURE**

PROSLIDE-B

Mounting system for facades and wall claddings
from expanded metal mesh



Bespoke
design



Spatial
effect



Free
ventilation



Building
redevelopment



Indoor
& outdoor



Durability
& resistance



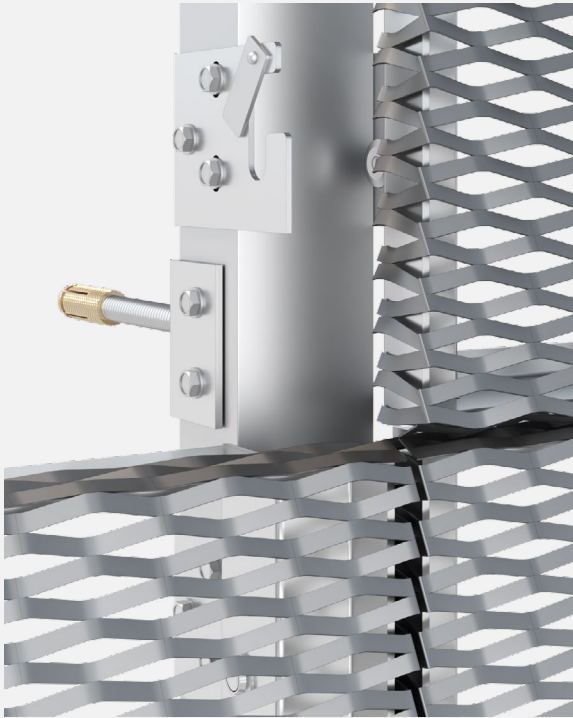
Low
maintenance



Eco-friendly

PROSLIDE-B

MOUNTING SYSTEM FOR EXPANDED METAL MESH



DESCRIPTION

The "B" variant of the PROSLIDE system is designed for the installation of façade and wall claddings made of solid or perforated metal panels and expanded metal mesh with the strand below 3.5mm. The mesh is formatted by cutting and bending, and then welded around the perimeter to a special frame. The panel with special clips slides into the mounting brackets, and a movable lock prevents it from slipping out. Innovative mounting of "C" section support profile with threaded rods replaces traditional consoles and allows installation after insulation. In the PROSLIDE-B variant, the assembled mesh panels form a uniform surface with visible divisions.

APPLICATIONS

Metal facades
Wall claddings
Roof equipment covers

TECHNICAL PARAMETERS

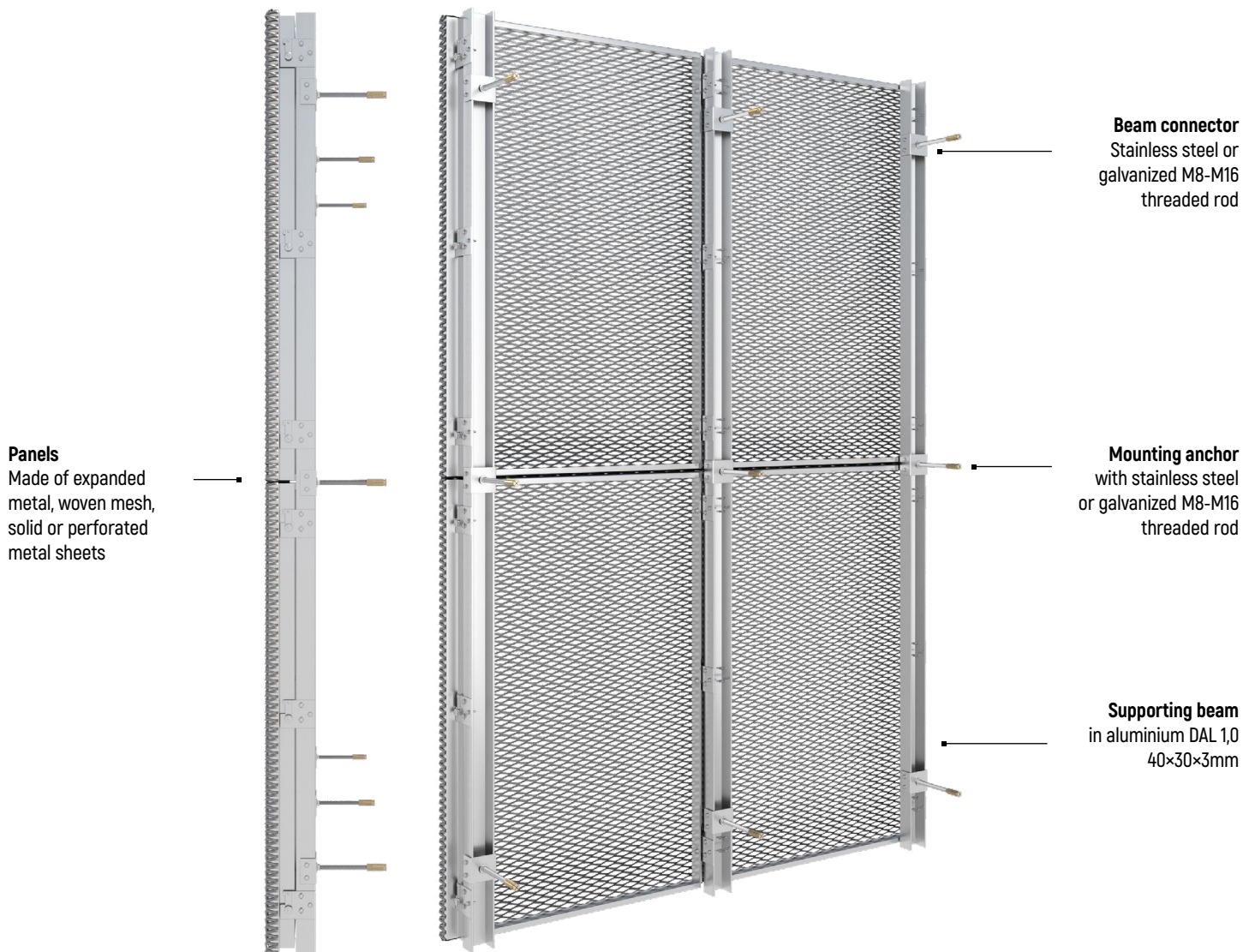
Max. panel width:	1 500 mm
Max. panel length:	3 000 mm
Infill type:	expanded metal mesh
Infill material:	aluminium
Frame:	aluminium
Surface finishing:	powder coating

GUIDELINES

The panel dimensions are multiples of the expanded metal mesh. Installation of the panels begins from the bottom to the top rows, and removal in reverse order. The aluminum C section supporting profile, is attached with a clip on a steel threaded rod and anchored to the support layer with a brass stud.

PROSLIDE-B

MOUNTING SYSTEM FOR EXPANDED METAL MESH



RECOMMENDED MESH MODELS

EXPANDED METAL MESH

GALLA C025010025

GALLA C030013035

GALLA C043017025

GALLA C050019040



FOLLOW US

