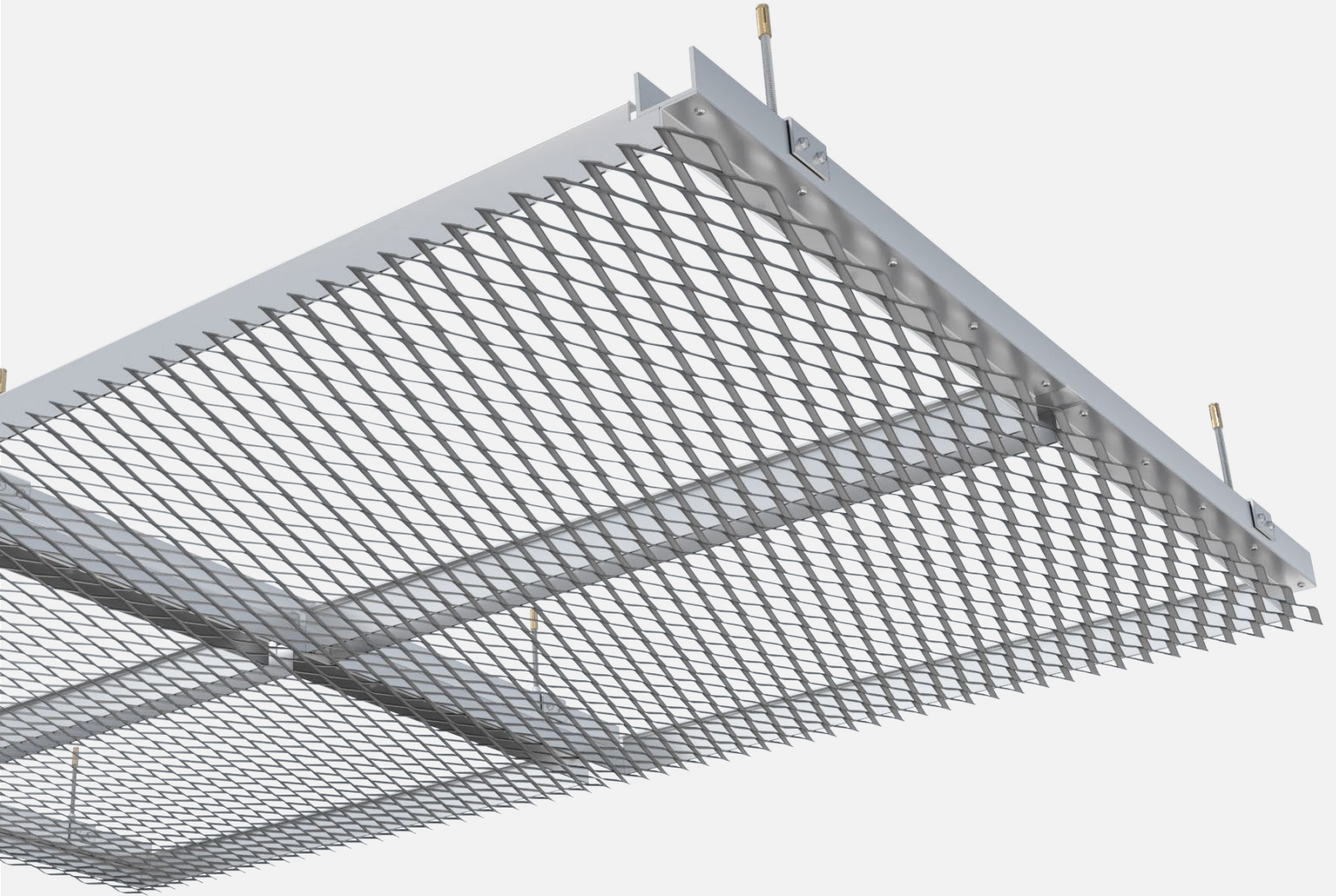




**PROGRESS  
ARCHITECTURE**

# PROBOLT-C

Mounting system for ceiling panels  
from expanded metal mesh



**Bespoke  
design**



**Indoor  
& outdoor**



**Eco-friendly**



**Vertical and  
diagonal panels**



**Installation  
at any angle**



**No visible  
divisions**



**Vandal-resistant**



**A1 - A2 fire  
classification**



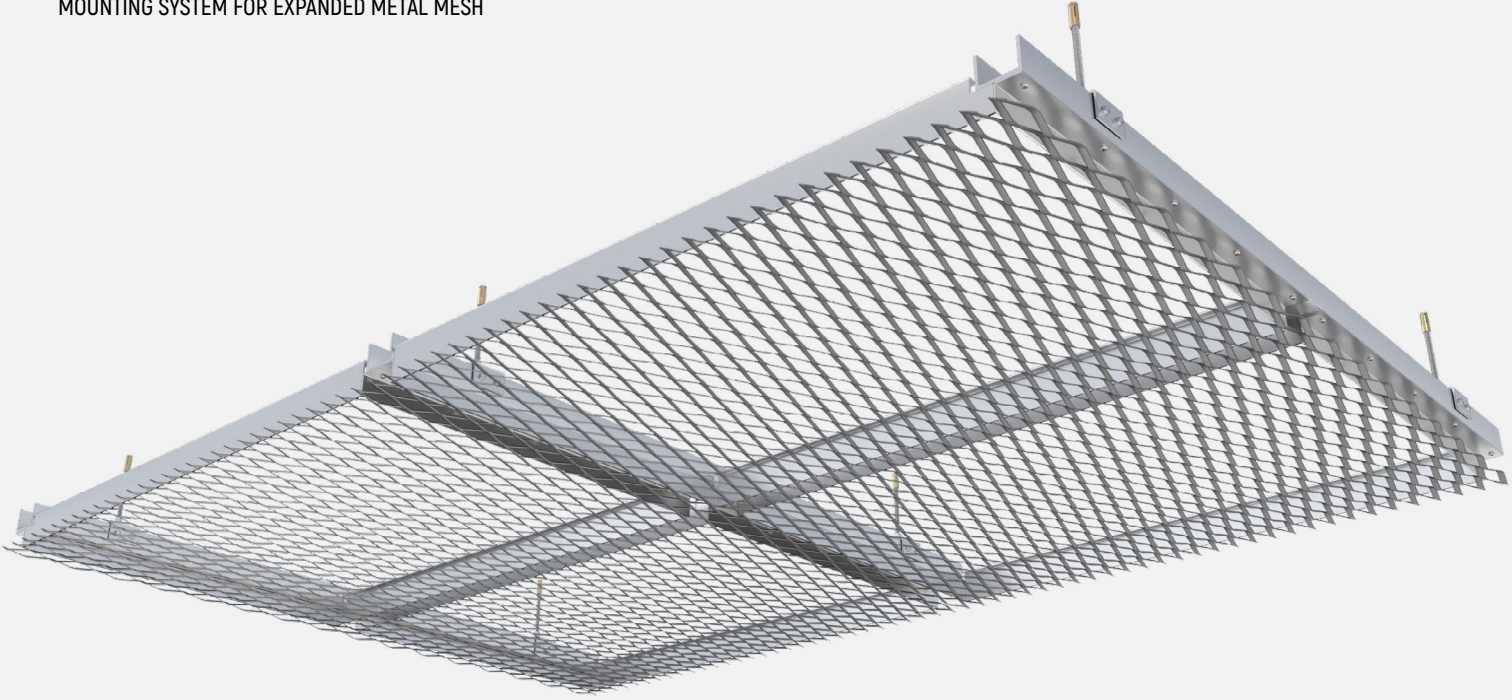
**Quick access**



**Minimal depth**

# PROBOLT-C

MOUNTING SYSTEM FOR EXPANDED METAL MESH



## DESCRIPTION

The "C" variant of the PROBOLT system is designed for the installation of facade, wall and ceiling made of expanded metal mesh panels with a strand exceeding 2,5mm. The panels are fixed directly to the universal C section support profile. The system allows the assembly and disassembly of individual panels. The mesh is formatted by cutting and then welded around the perimeter to a special frame. Removal of individual panels does not cause the remaining panels to move. In the PROBOLT-C variant, the assembled mesh panels continue the grid pattern and form a uniform surface without visible divisions.

## GUIDELINES

The panel dimensions are multiples of the expanded metal mesh. The panels can be assembled in any order. The aluminum C section supporting profile, is attached with a clip on a steel threaded rod and anchored to the support layer with a brass stud. The ceiling substructure is composed of a single-level support grid in a parallel arrangement. The grid is suspended from the ceiling by slings.

## TECHNICAL PARAMETERS

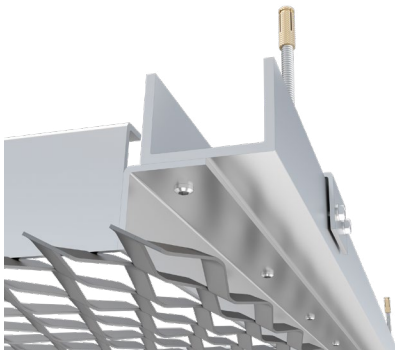
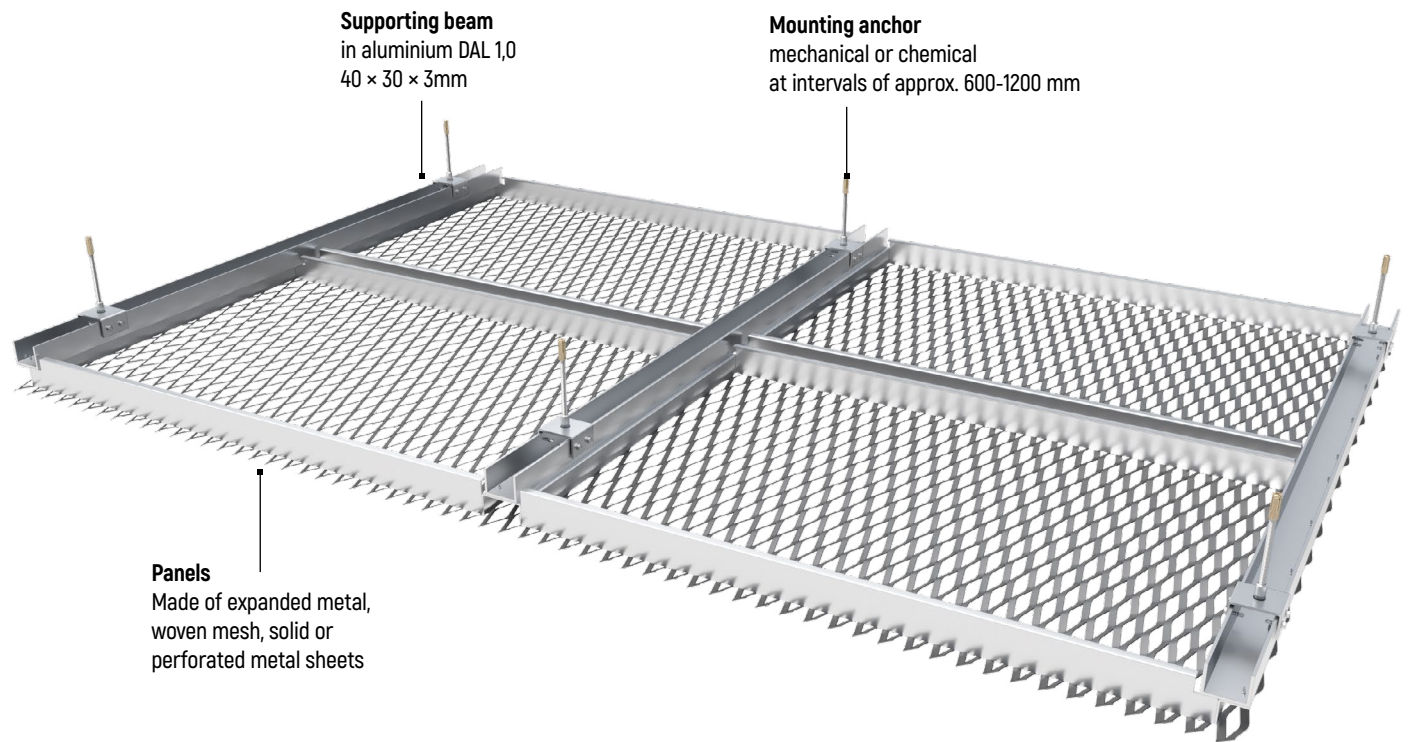
Max. panel width:	1 500 mm
Max. panel length:	3 000 mm
Infill type:	expanded metal mesh
Infill material:	aluminium
Frame:	aluminium
Surface finishing:	powder coating

## APPLICATIONS

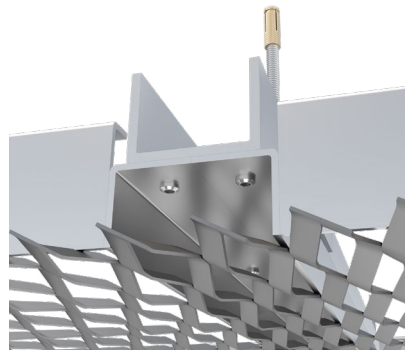
Interior suspended ceilings  
Exterior suspended ceilings

# PROBOLT-C

MOUNTING SYSTEM FOR EXPANDED METAL MESH



mesh panels formatted by cutting



mesh panels with hidden substructure

## RECOMMENDED MESH MODELS

### EXPANDED METAL MESH

GALLA C063025090

GALLA C100035125

GALLA C125040145

GALLA C150050180

GALLA C200060200



FOLLOW US

