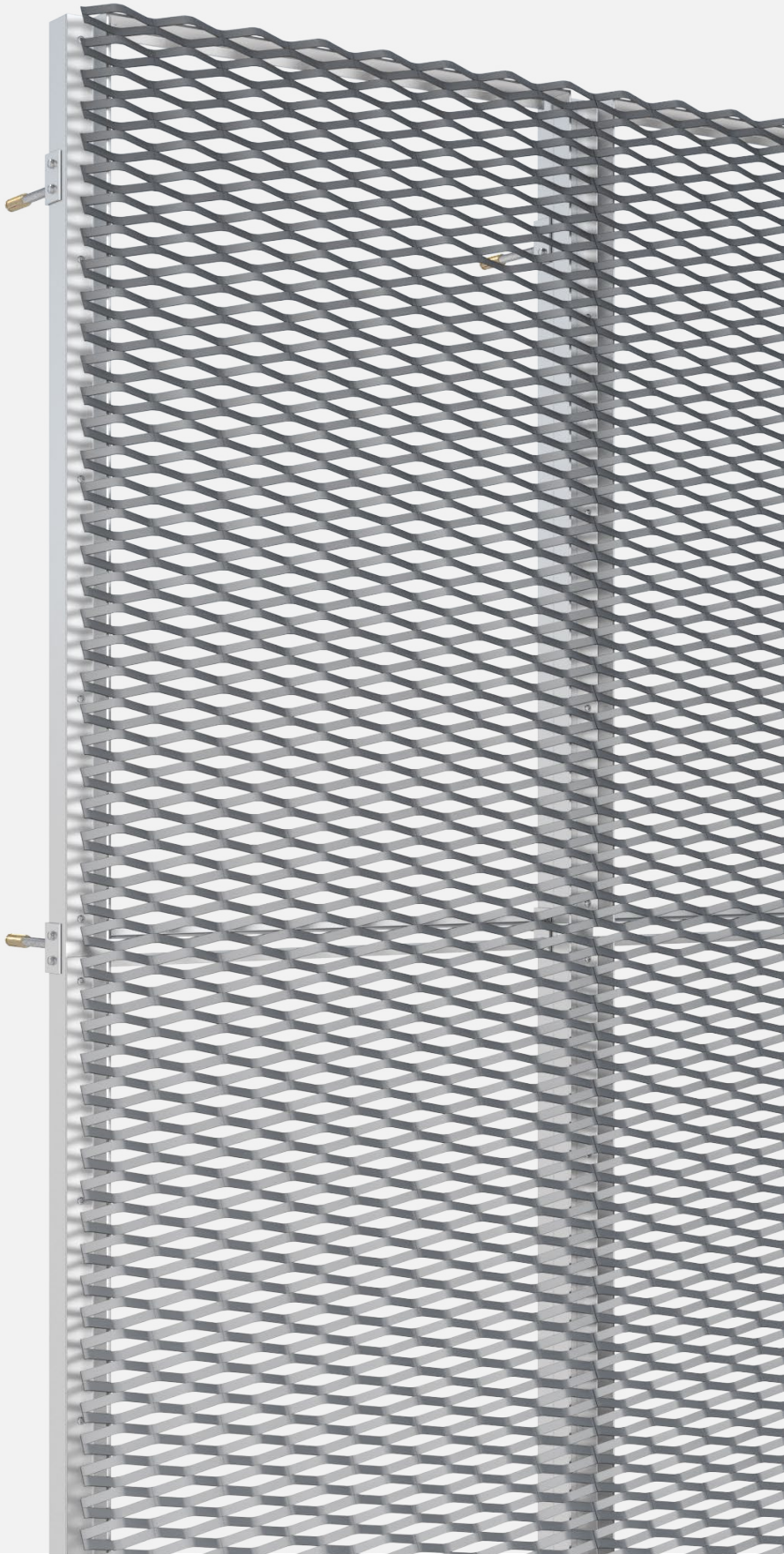




**PROGRESS
ARCHITECTURE**

PROBOLT-C

Mounting system for facades and wall claddings
from expanded metal mesh



**Bespoke
design**



**Spatial
effect**



**Free
ventilation**



**Safety & access
protection**



**Building
redevelopment**



**Easy assembly
and disassembly**



**Indoor
& outdoor**



**Durability
& resistance**



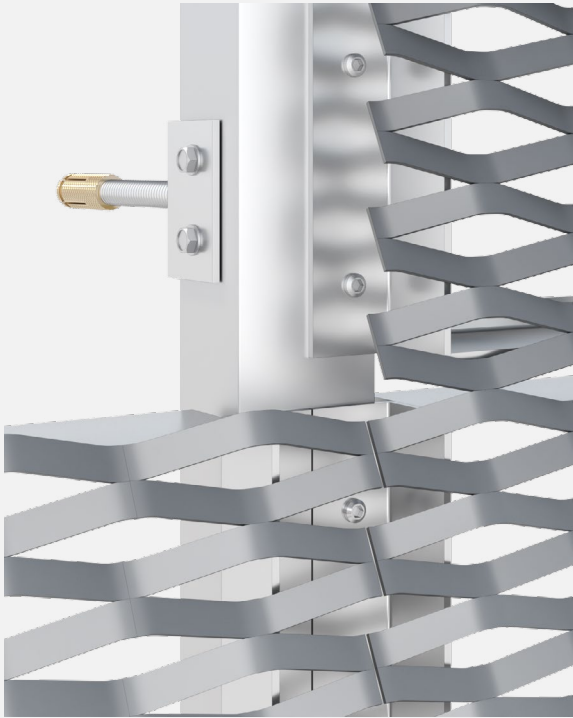
**Low
maintenance**



Eco-friendly

PROBOLT-C

MOUNTING SYSTEM FOR EXPANDED METAL MESH



DESCRIPTION

The "C" variant of the PROBOLT system is designed for the installation of facade, wall and ceiling made of expanded metal mesh panels with a strand exceeding 2,5mm. The panels are fixed directly to the universal C section support profile. The system allows the assembly and disassembly of individual panels. The mesh is formatted by cutting and then welded around the perimeter to a special frame. Removal of individual panels does not cause the remaining panels to move. In the PROBOLT-C variant, the assembled mesh panels continue the mesh pattern and form a uniform surface without visible divisions.

APPLICATIONS

- Metal facades
- Metal ceilings
- Wall claddings
- Wall partitions
- Roof equipment covers
- Fences
- Balustrades and railings

TECHNICAL PARAMETERS

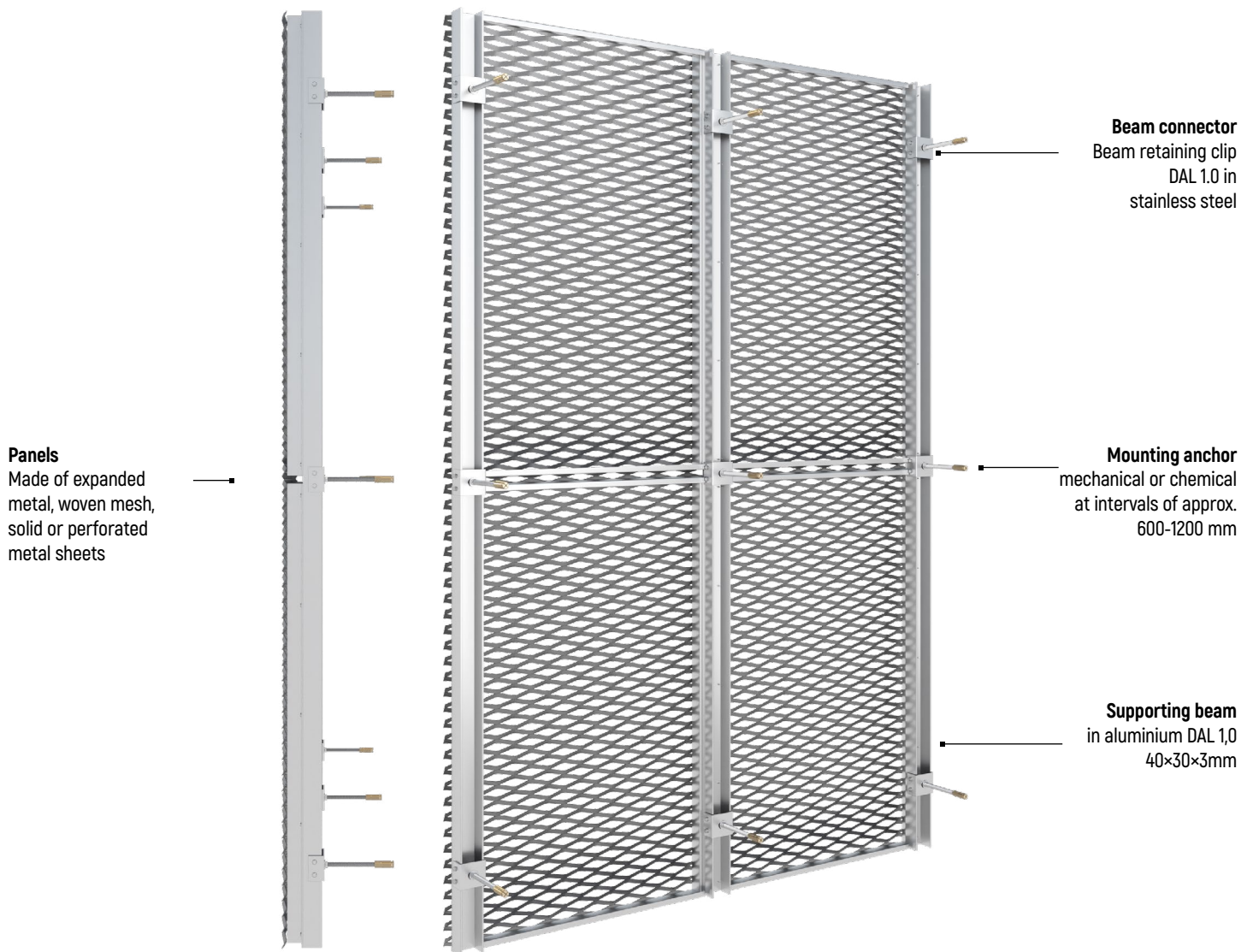
Max. panel width:	1 500 mm
Max. panel length:	3 000 mm
Infill type:	expanded metal mesh
Infill material:	aluminium
Frame:	aluminium
Surface finishing:	powder coating

GUIDELINES

The panel dimensions are multiples of the expanded metal mesh. The panels can be assembled in any order. The aluminum C section supporting profile, is attached with a clip on a steel threaded rod and anchored to the support layer with a brass stud.

PROBOLT-C

MOUNTING SYSTEM FOR EXPANDED METAL MESH



RECOMMENDED MESH MODELS

EXPANDED METAL MESH

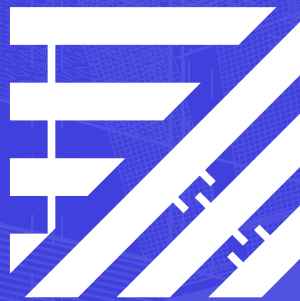
GALLA C063025090

GALLA C100035125

GALLA C125040145

GALLA C150050180

GALLA C200060200



FOLLOW US

