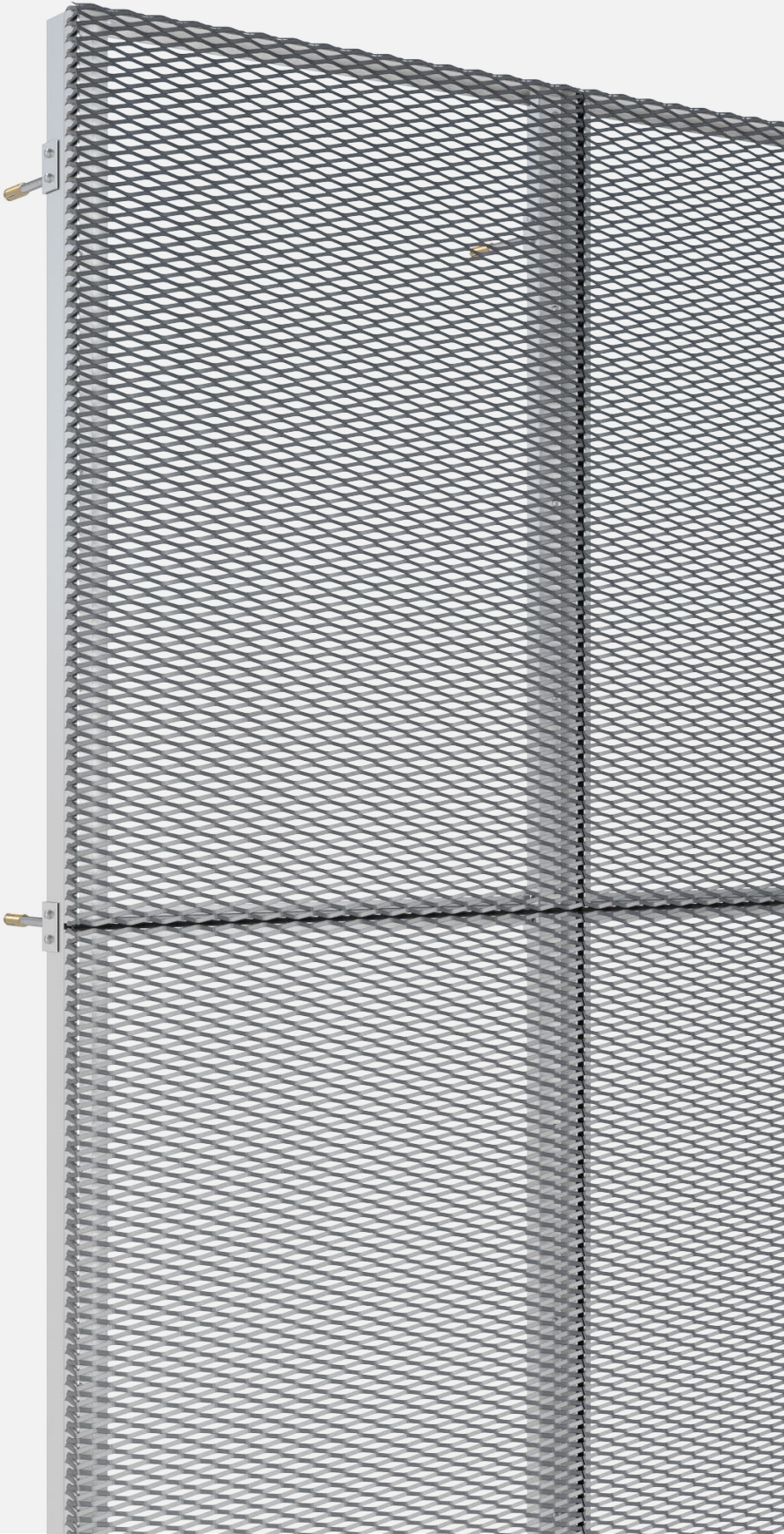




**PROGRESS
ARCHITECTURE**

PROBOLT-B

Mounting system for facades and wall claddings
from expanded metal mesh



Bespoke
design



Spatial
effect



Free
ventilation



Safety & access
protection



Building
redevelopment



Easy assembly
and disassembly



Indoor
& outdoor



Durability
& resistance



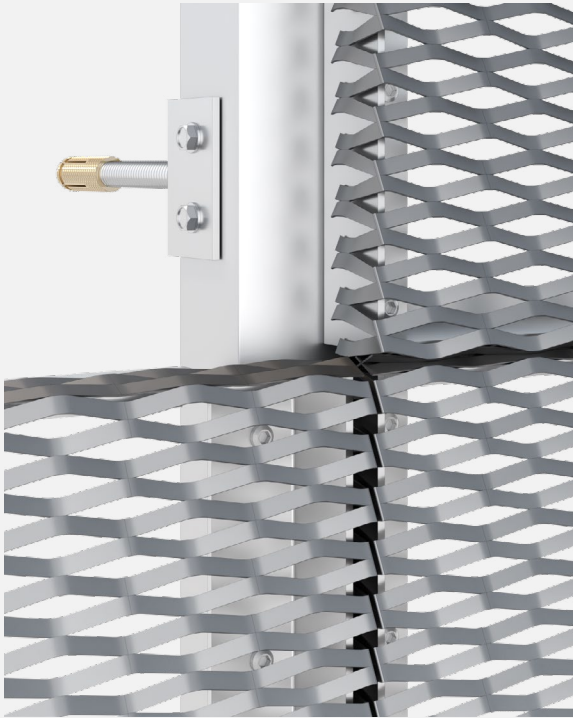
Low
maintenance



Eco-friendly

PROBOLT-B

MOUNTING SYSTEM FOR EXPANDED METAL MESH



DESCRIPTION

The "B" variant of the PROBOLT system is designed for the installation of facade, wall and ceiling made of expanded metal mesh panels with a strand below 3,5mm. The panels are fixed directly to the universal C section support profile. The system allows the assembly and disassembly of individual panels. The mesh is formatted by cutting and bending, and then welded around the perimeter to a special frame. Removal of individual panels does not cause the remaining panels to move. In the PROBOLT-B variant, the assembled mesh panels form a uniform surface with visible divisions.

APPLICATIONS

- Metal facades
- Metal ceilings
- Wall claddings
- Wall partitions
- Roof equipment covers
- Fences
- Balustrades and railings

TECHNICAL PARAMETERS

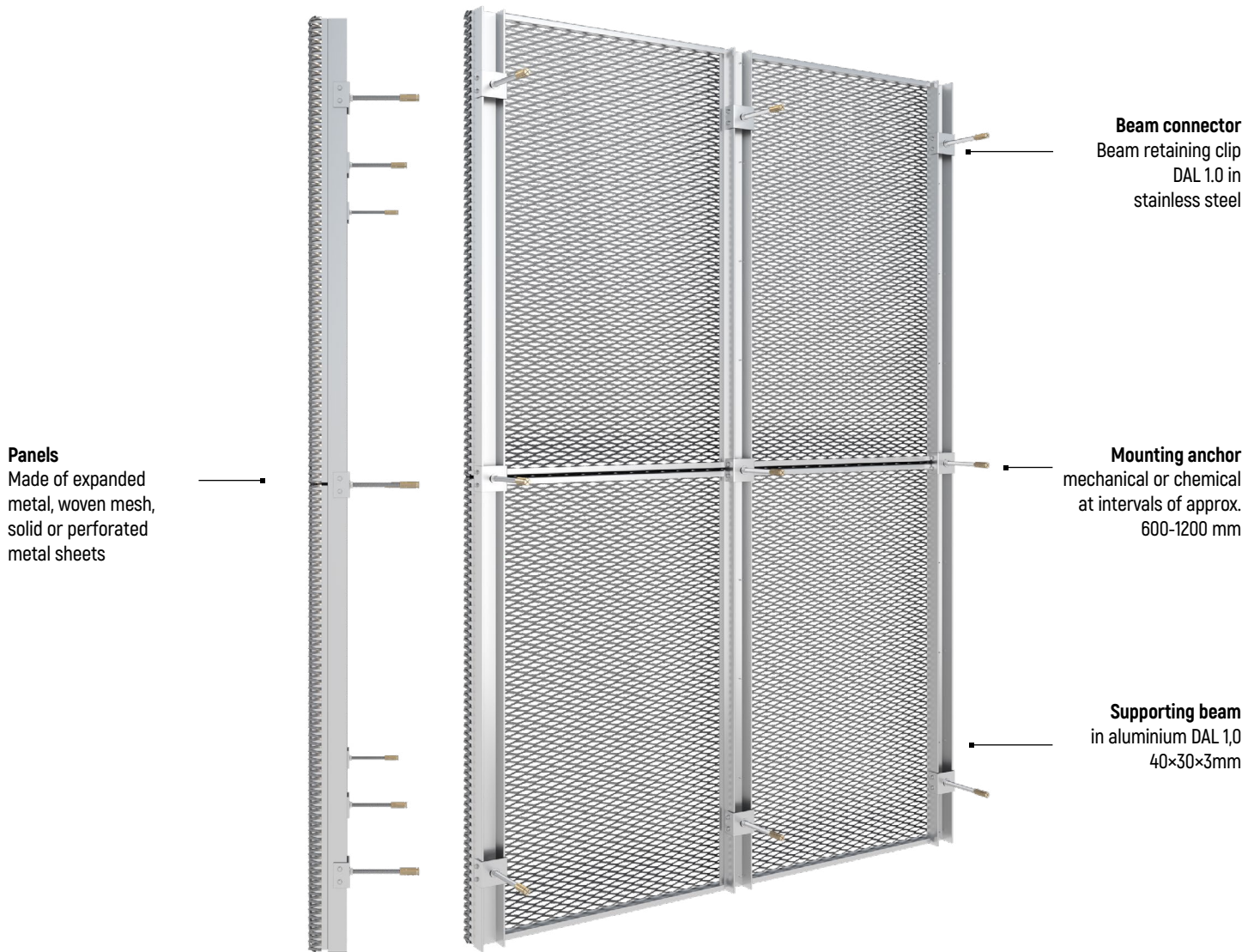
Max. panel width:	1 500 mm
Max. panel length:	3 000 mm
Infill type:	expanded metal mesh
Infill material:	aluminium
Frame:	aluminium
Surface finishing:	powder coating

GUIDELINES

The panel dimensions are multiples of the expanded metal mesh. The panels can be assembled in any order. The aluminum C section supporting profile, is attached with a clip on a steel threaded rod and anchored to the support layer with a brass stud.

PROBOLT-B

MOUNTING SYSTEM FOR EXPANDED METAL MESH



RECOMMENDED MESH MODELS

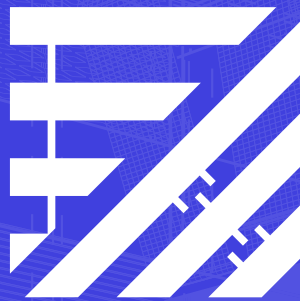
EXPANDED METAL MESH

GALLA C025010025

GALLA C030013035

GALLA C043017025

GALLA C050019040



FOLLOW US

