

PROGRESS
ARCHITECTURE

WALL CLADDINGS

Architectural mesh and grid systems

+60

CUSTOMERS IN 60
COUNTRIES ACROSS
THE WORLD

ISO

WE WORK IN
ACCORDANCE WITH EN
1090, ISO 9001:2015, TUV

35

YEARS OF
EXPERIENCE

3

MANUFACTURING
FACILITIES

+300

A TEAM OF
300 SPECIALISTS

360°

COMPREHENSIVE DESIGN
AND INVESTMENT SUPPORT

**GET A RELIABLE
AND PROFESSIONAL
PARTNER**

DRAW ON OUR KNOWLEDGE AND EXPERIENCE



LET'S TAKE CARE OF OUR ENVIRONMENT TOGETHER

- Reduction of solar exposure and energy consumption.
- Effective production processes and waste reduction.
- Recyclable materials.



MORE THAN

230

PATTERNS

OF METAL

ARCHITECTURAL

MESHES AND GRIDS



WIDE RANGE OF MATERIALS

Stainless steel, low carbon steel, galvanised steel, copper, brass, bronze, aluminium, Pro-ZINAL®.



FINISHING AND COLOURS

Full RAL palette, HWF and PVDF custom colours, anodising.



PERSONALISED IMPRINT

Logo or personalised artwork directly on the mesh/grid.



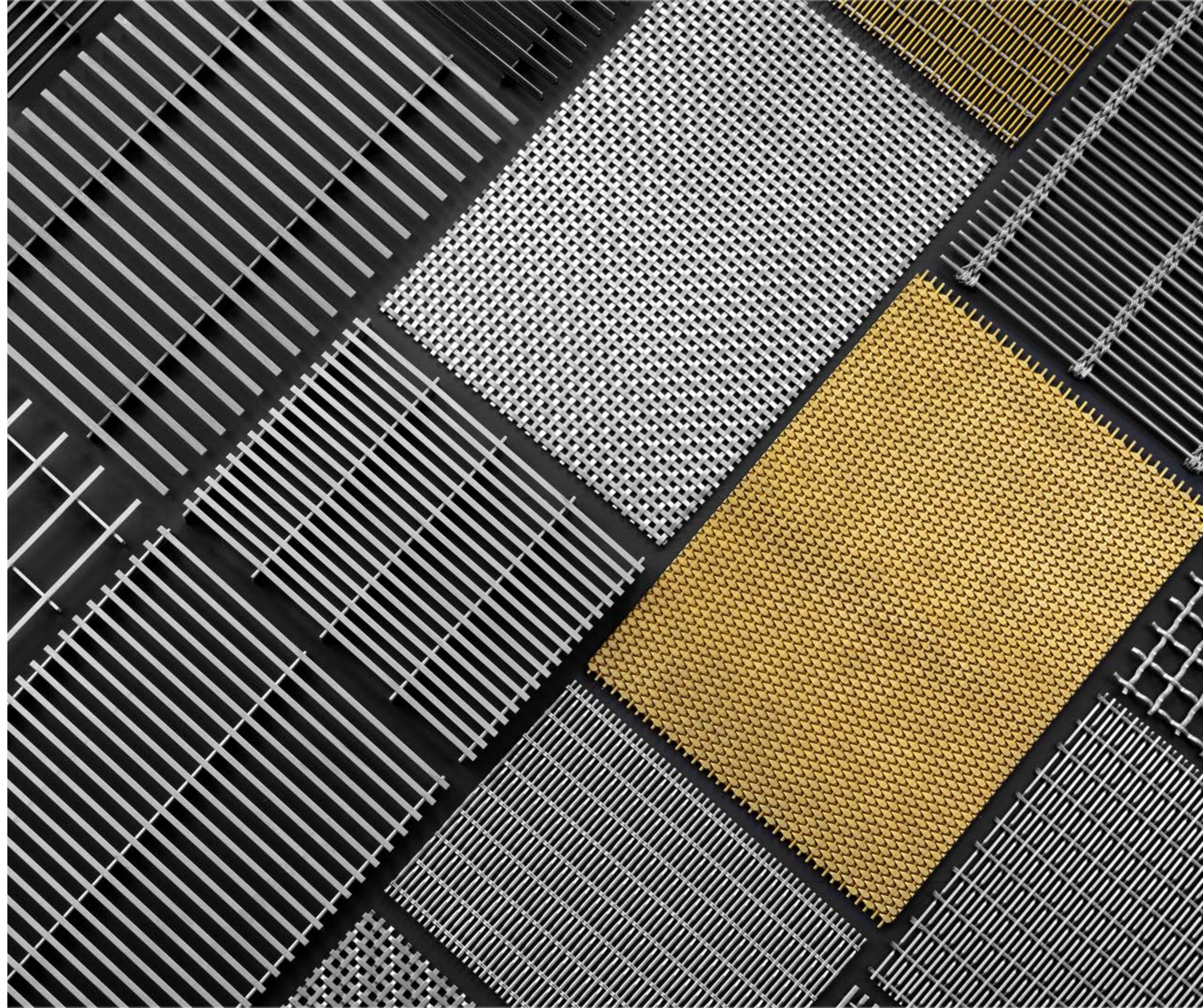
LARGE FORMAT PANELS

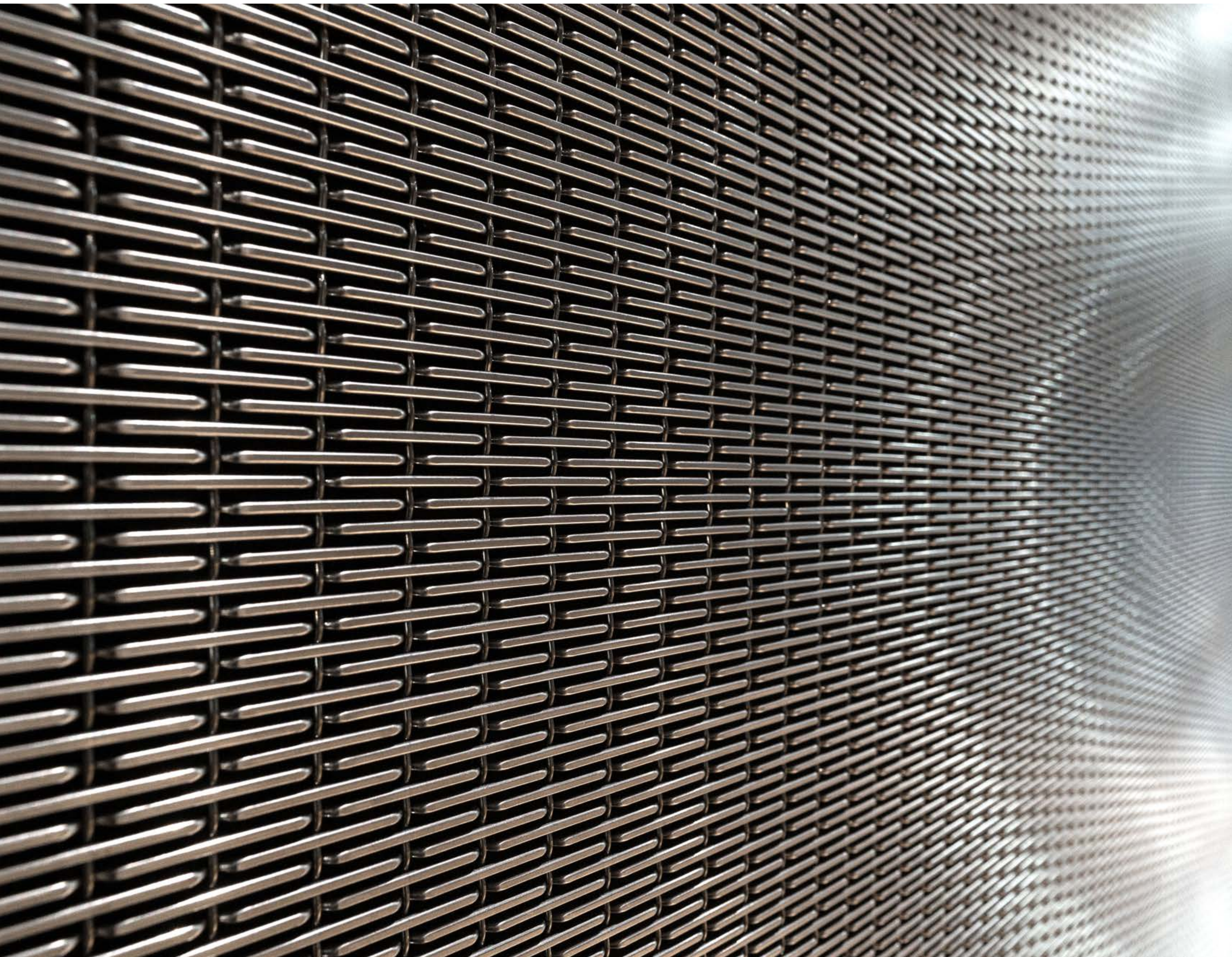
Up to 4 m wide and 30 m long.



HIGH RESISTANCE

to mechanical damage and changeable weather conditions.





WHY CHOOSE IT?

EXPLORE THE BENEFITS



LASTING EFFECT

The use of extremely damage-resistant stainless steel or other metals ensures a long-lasting visual effect. Even in case of frequent contact with hands.



UNIQUE DESIGN

The variety of patterns and material solutions inspires creative work with the room and space. A wide range of technical parameters enables control of the open area.



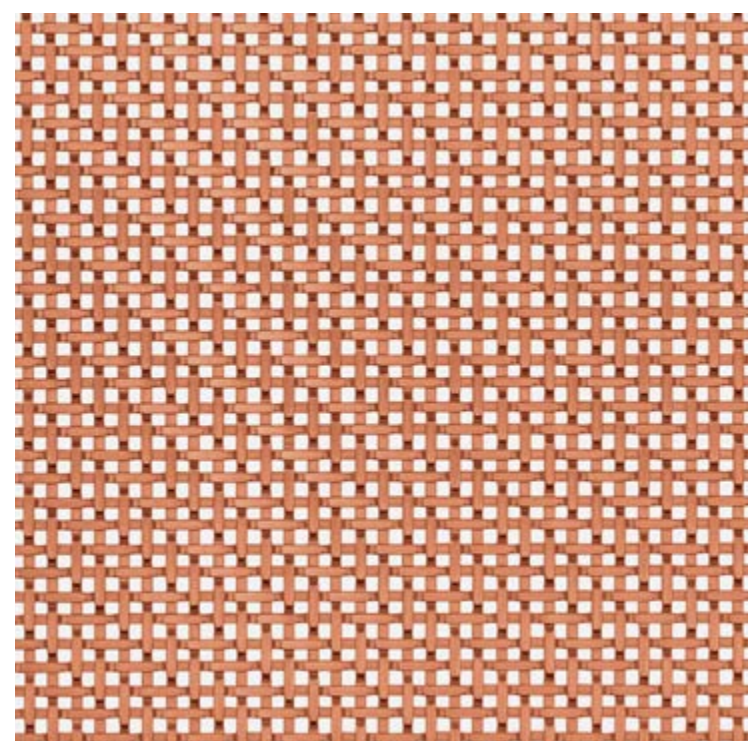
SIMPLE INSTALLATION

A system of frames and mounting accessories allows for quick and easy installation in a variety of planes and formats. Facade cladding also works well as partitions and screens. Both flat and curved surface installation is possible.

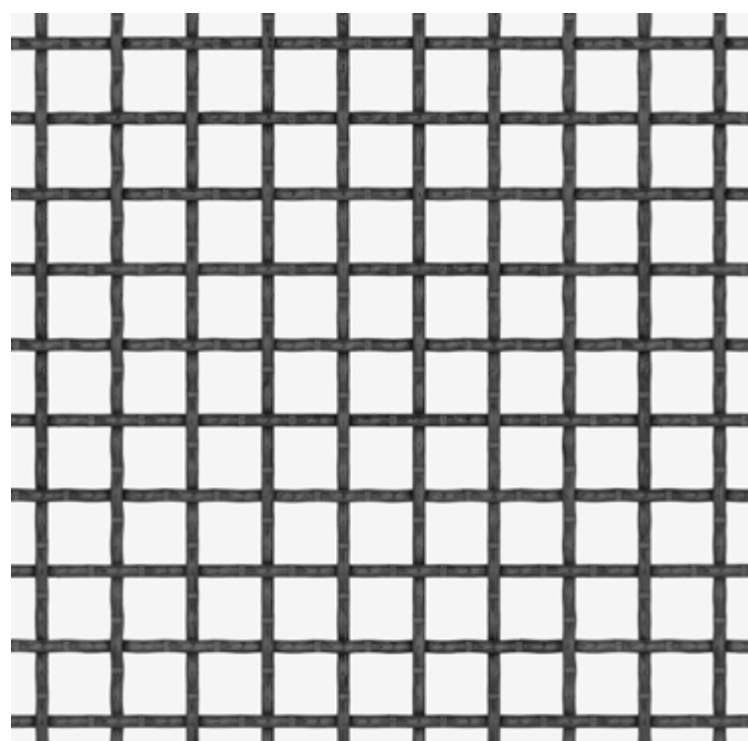


ENVIRONMENTALLY FRIENDLY

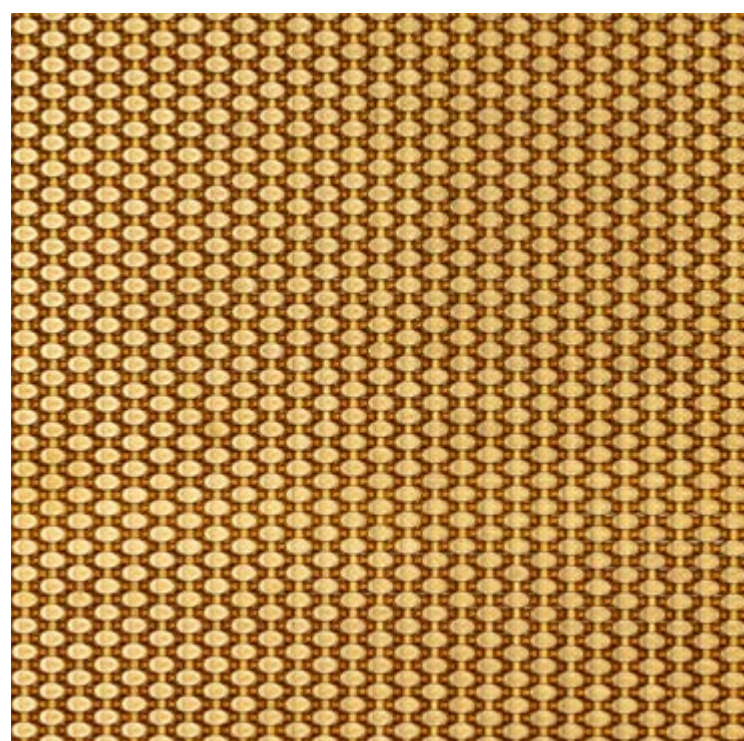
Made of a variety of steel grades and metal types, the grids and meshes are 100% recyclable and are part of the green certification process.



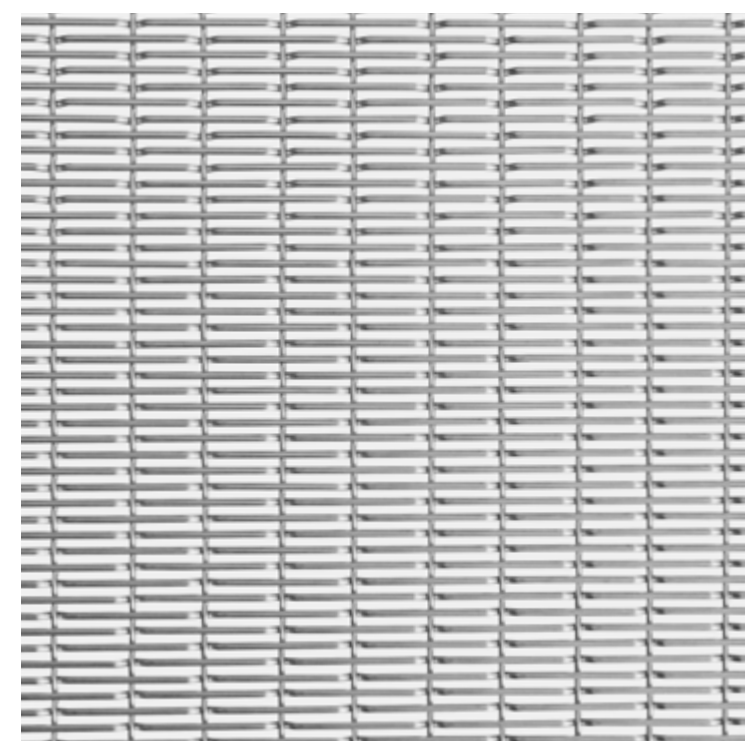
ARIES OL P01415
 Open area: **28,1 %** Material: **SN C B**
 Weight: **10,9 kg/m²**
 Mesh: **3,5 × 3,5 mm**



ARIES P01035
 Open area: **69,4 %** Material: **SN O AL C B PR**
 Weight: **2,7 kg/m²**
 Mesh: **15 × 15 mm**



EGIDA P14035
 Open area: **0,0 %** Material: **SN O C B PR**
 Weight: **21,6 kg/m²**
 Mesh: **0 × 3,5 mm**

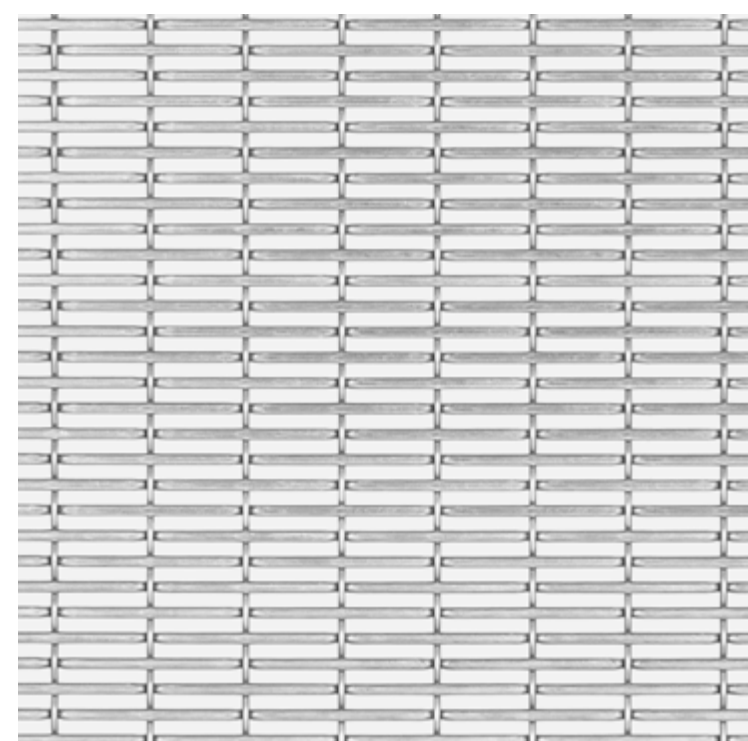


LEO P06030
 Open area: **45,6 %** Material: **SN O AL C B**
 Weight: **2,6 kg/m²**
 Mesh: **2,0 × 15,5 mm**

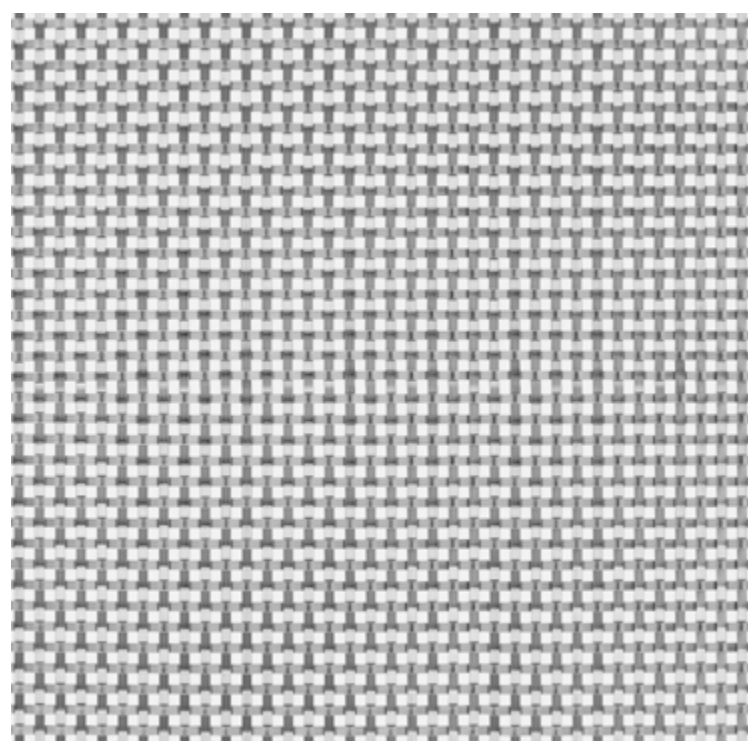
EXAMPLES OF **MESH** **PATTERNS**

MORE THAN 170 PATTERNS OF WOVEN MESHES

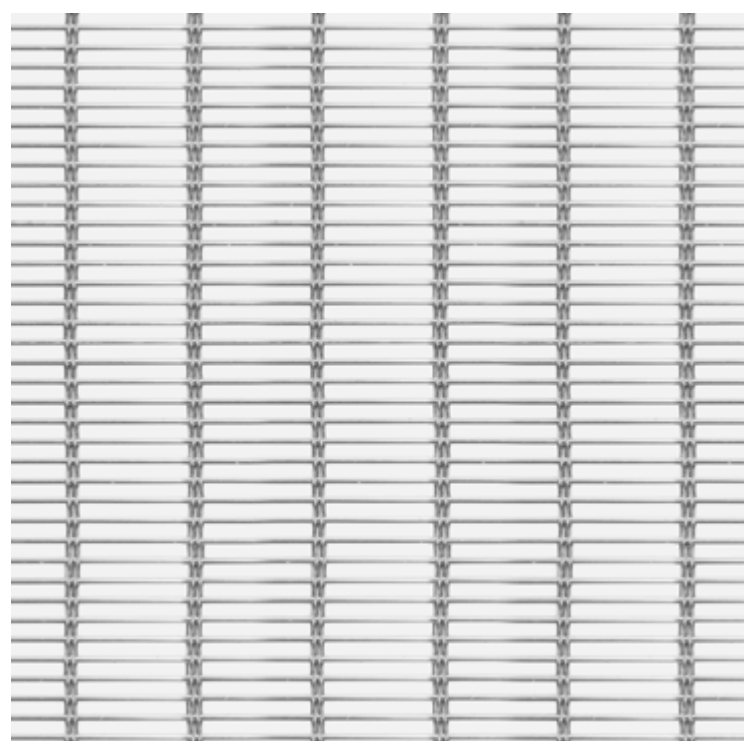
- Available mesh materials:
- SN** STAINLESS STEEL
 - SW** CARBON STEEL
 - O** GALVANISED STEEL
 - AL** ALUMINIUM
 - C** COPPER
 - B** BRASS
 - BR** BRONZE
 - PR** Pro-ZINAL®



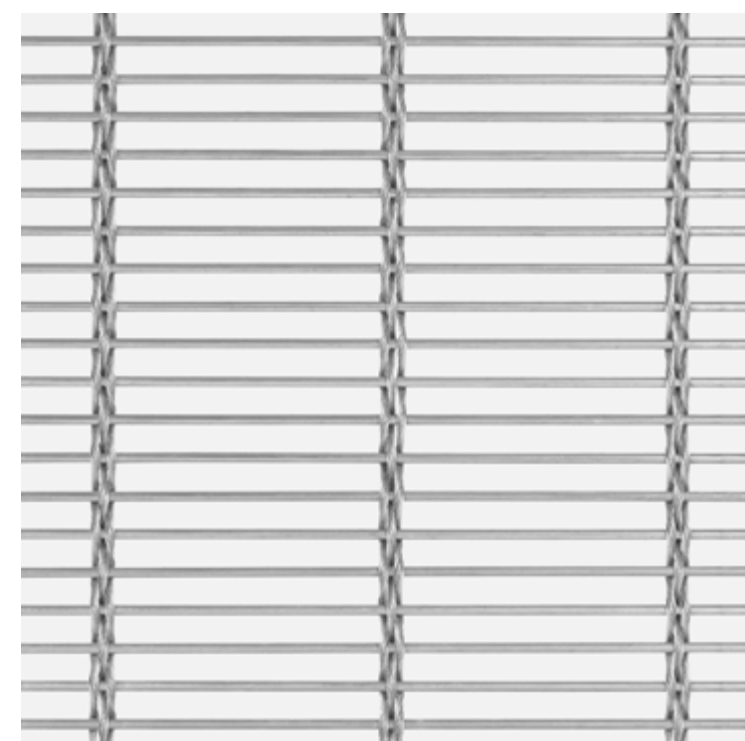
LEO P06051
 Open area: **49,9 %** Material: **SN O AL C B PR**
 Weight: **3,3 kg/m²**
 Mesh: **25 × 3,5 mm**



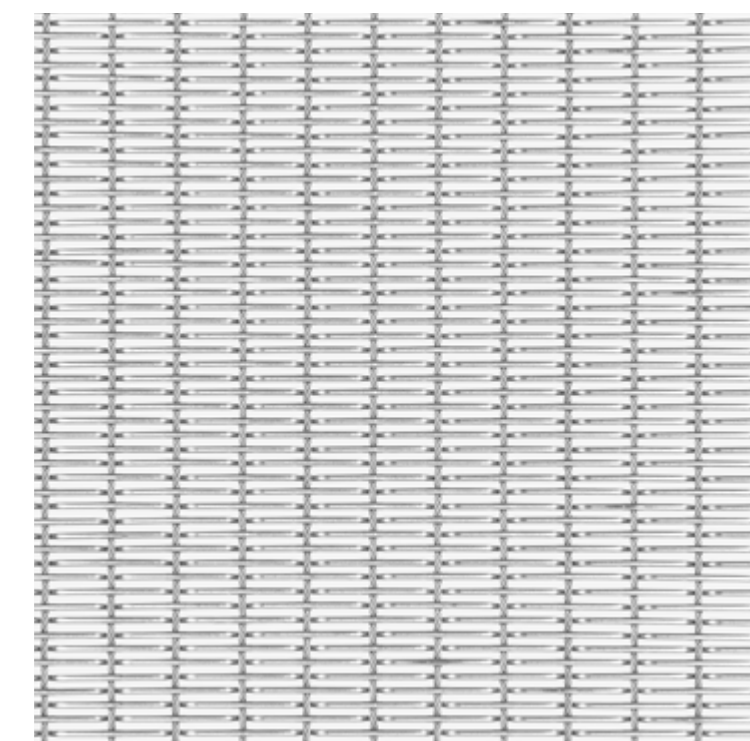
ORION P17030
 Open area: **25 %** Material: **SN O**
 Weight: **8,7 kg/m²**
 Mesh: **3 × 3 mm**



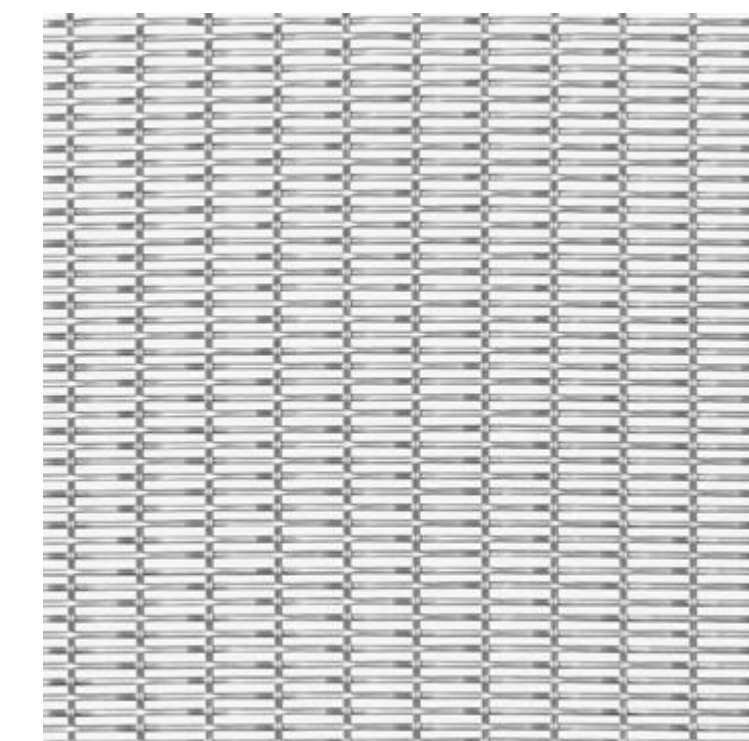
SAGITTARIUS P11432
 Open area: **53,3 %** Material: **SN**
 Weight: **5,6 kg/m²**
 Mesh: **3 × 32 mm**



SAGITTARIUS P11320
 Open area: **66,1 %** Material: **SN**
 Weight: **6,1 kg/m²**
 Mesh: **7,5 × 74 mm**



SATURN P05130
 Open area: **50,6 %** Material: **SN**
 Weight: **5,2 kg/m²**
 Mesh: **2 × 15,5 mm**



VIRGO P07020
 Prześwit: **43,3 %** Material: **SN O**
 Waga: **7,9 kg/m²**
 Oczko: **2 × 15,5 mm**

EXAMPLES OF
GRID
PATTERNS

MORE THAN 40 PATTERNS
OF ARCHITECTURAL GRIDS

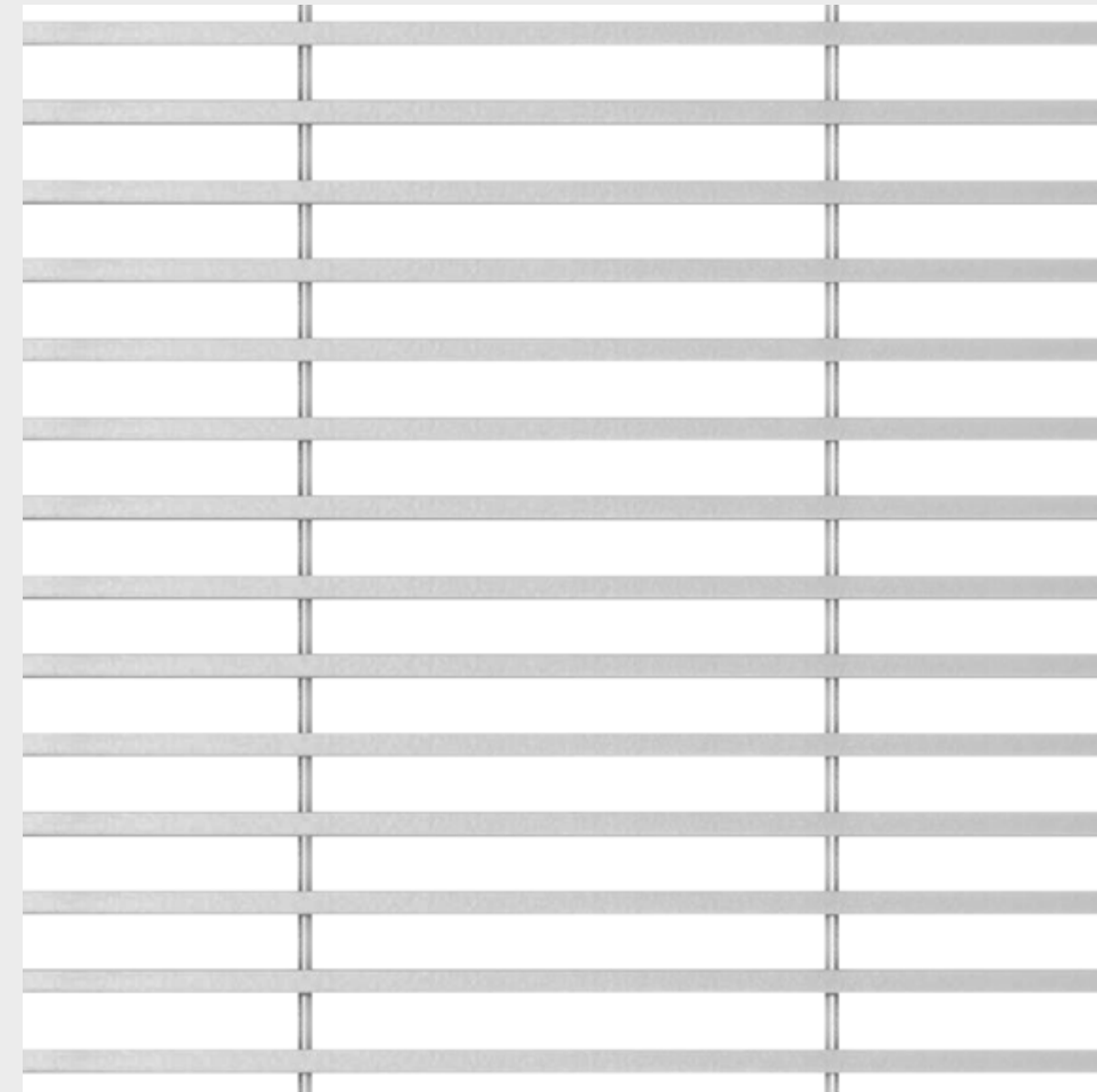
- Available grid materials:
- SN** STAINLESS STEEL
 - SW** CARBON STEEL
 - O** GALVANISED STEEL
 - AL** ALUMINIUM
 - C** COPPER
 - B** BRASS
 - BR** BRONZE
 - PR** Pro-ZINAL®



ARRAS D08100

Open area: **54 %**
Weight: **8,6 kg/m²**
Slot: **10 mm**

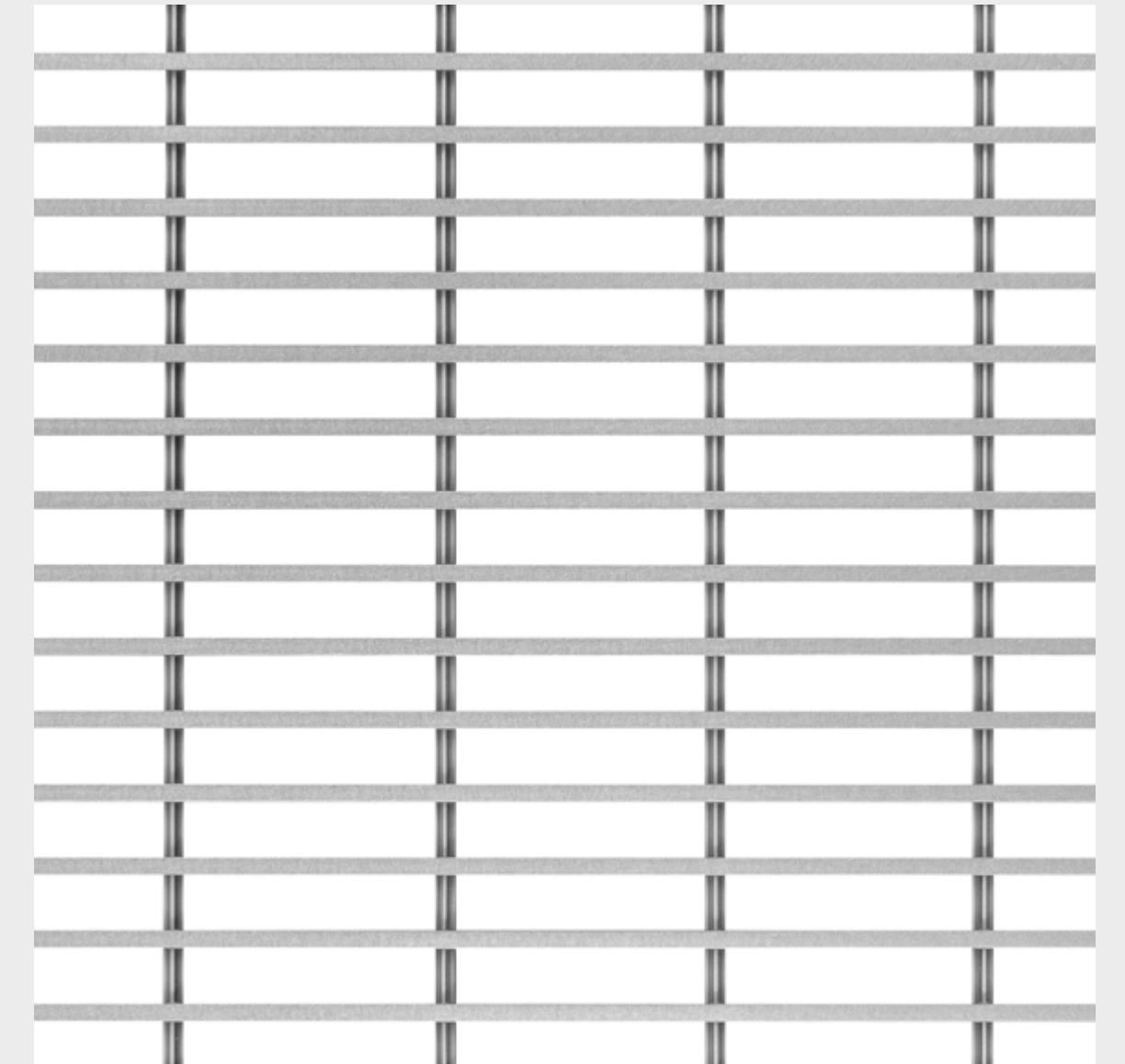
Material: **PR**



RADIUS Z10105

Open area: **70 %**
Weight: **6,9 kg/m²**
Slot: **10,5 mm**

Material: **PR**

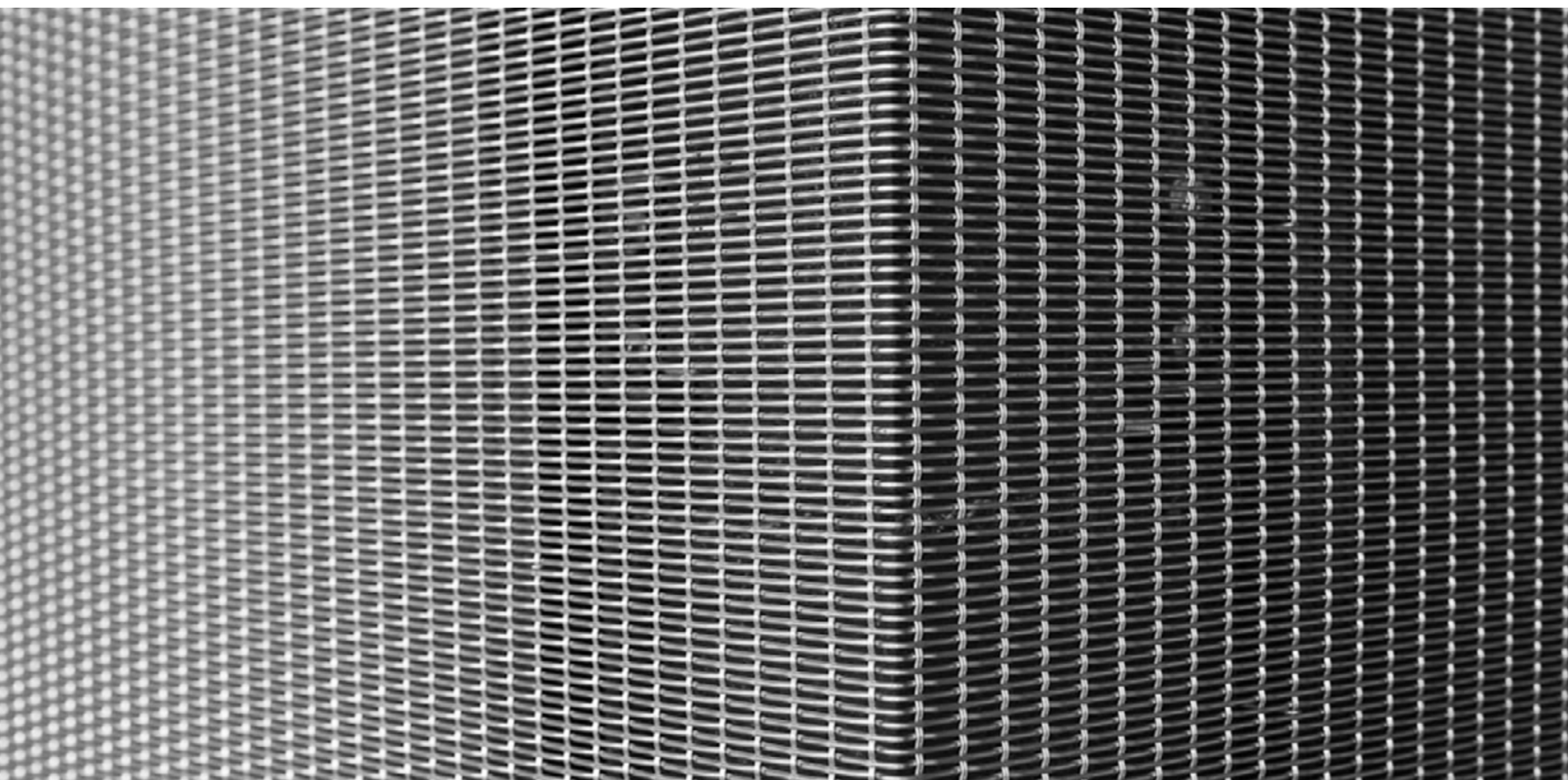


RADIUS Z07105

Open area: **75 %**
Weight: **6,2 kg/m²**
Slot: **10,5 mm**

Material: **SN**

UNLIMITED POSSIBILITIES



FOLDING

Provides a secure finishing solution for wall cladding without sharp corners.
Creates the perfect detail of joining two surfaces to one another.



BENDING

Enables harmonious fitting of the metal fabric to various shapes of the structure.
Allows for creating interesting visual effects, e.g., light refraction that adds depth and movement to the structure.



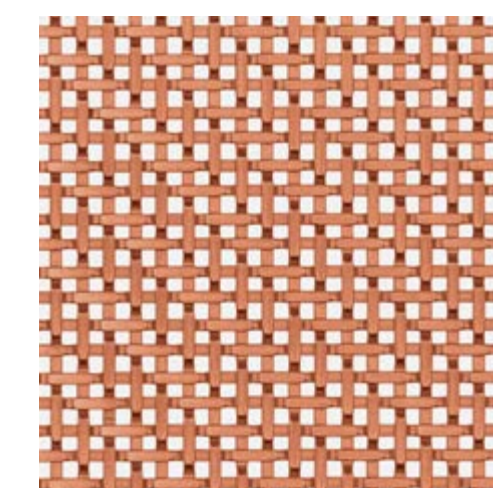
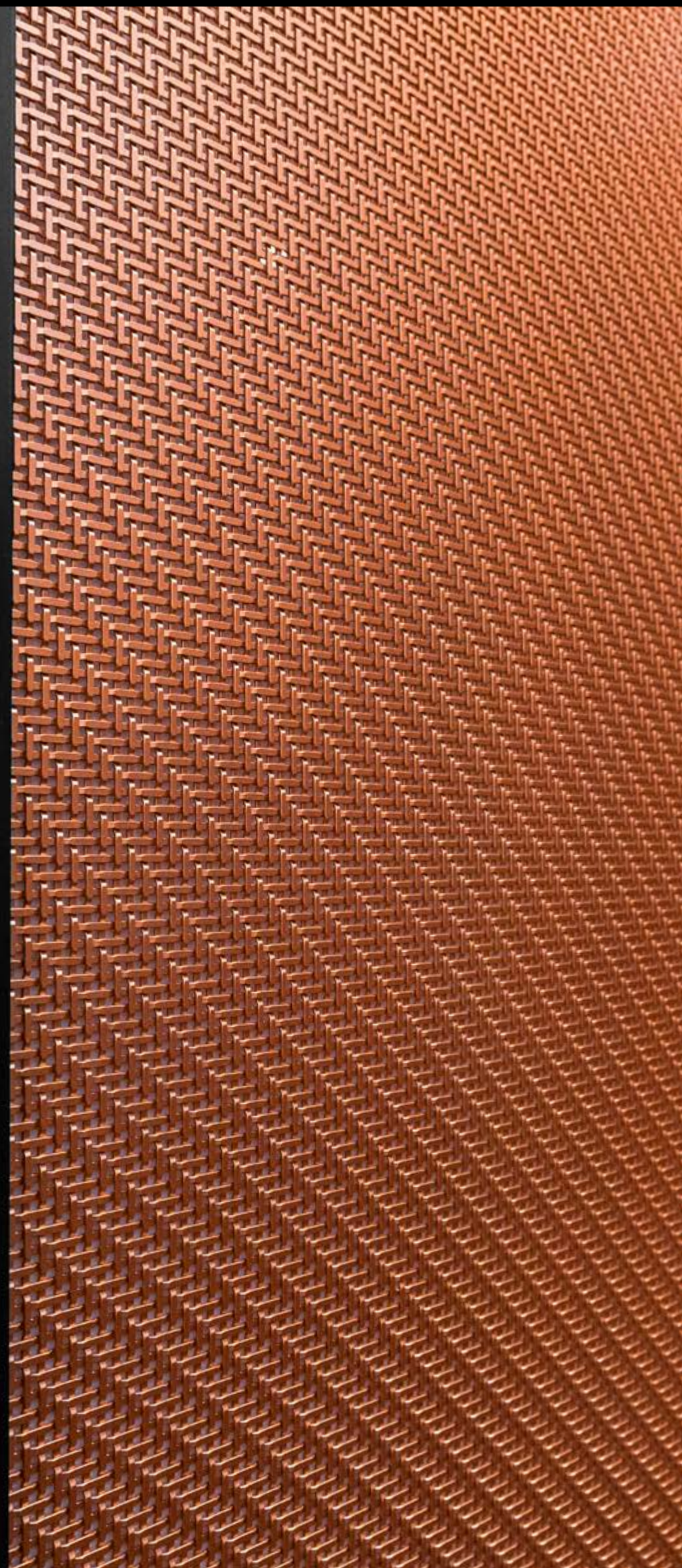
PROGRESS
ARCHITECTURE

FEATURED PROJECTS

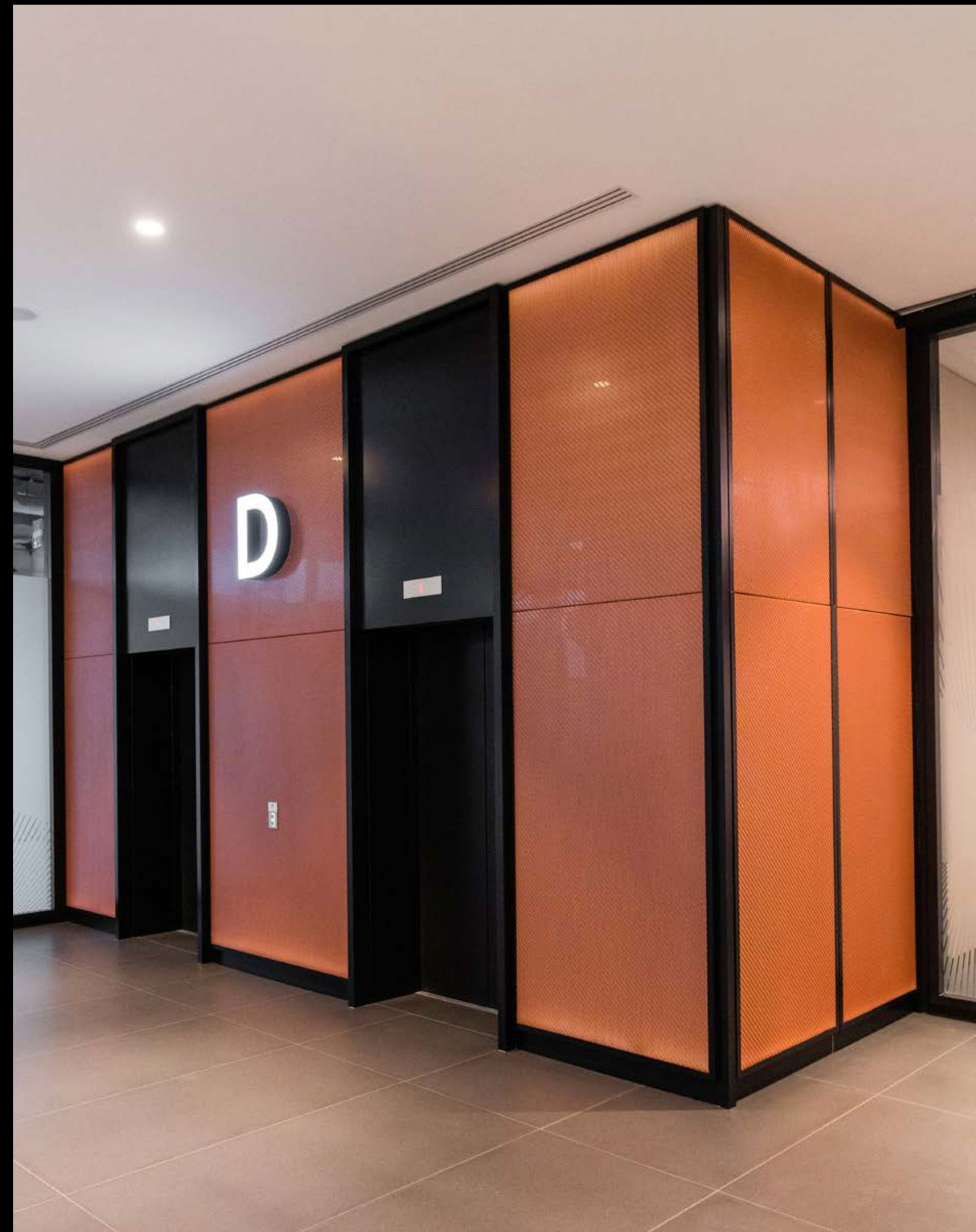
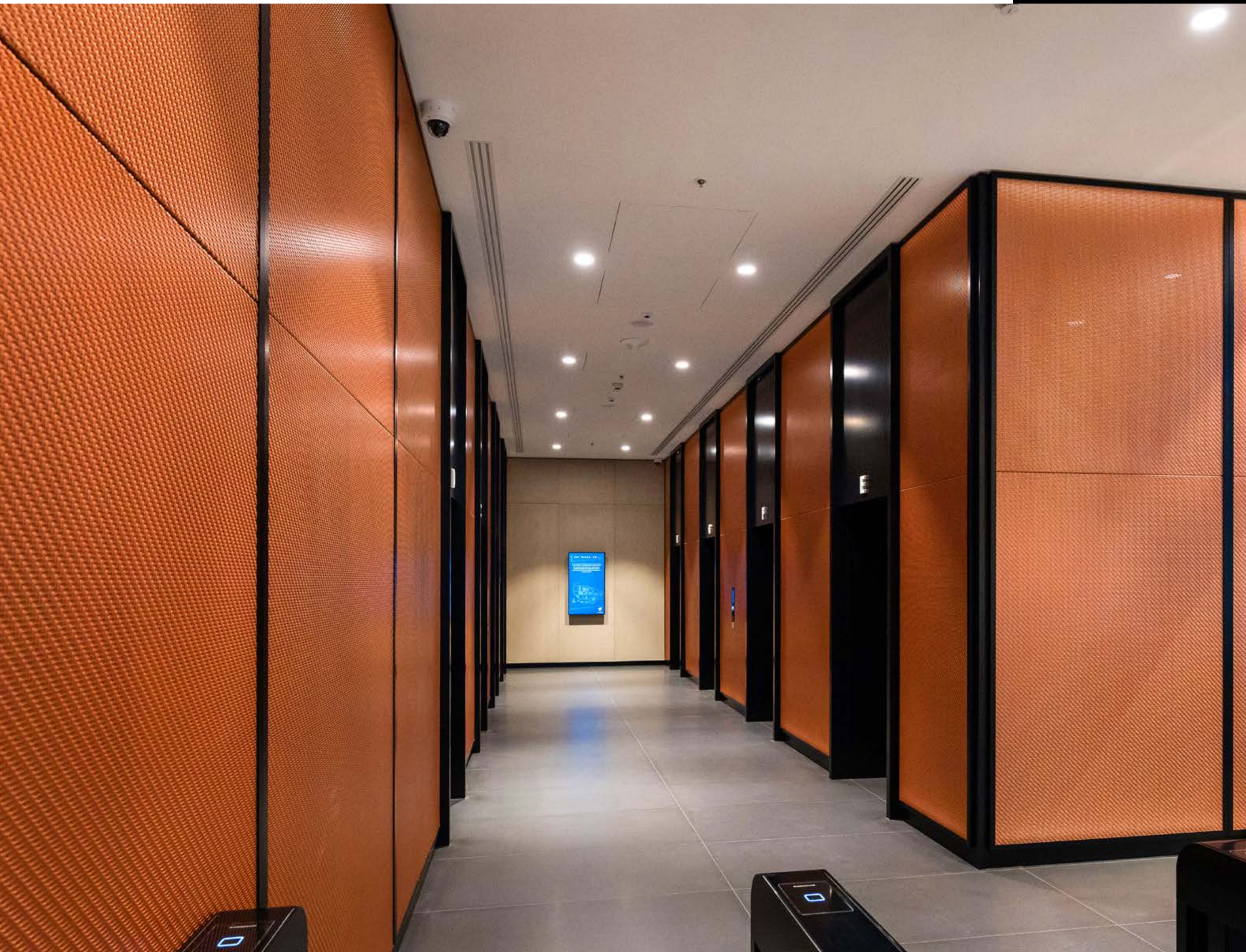
with architectural meshes and grids

Varso Place

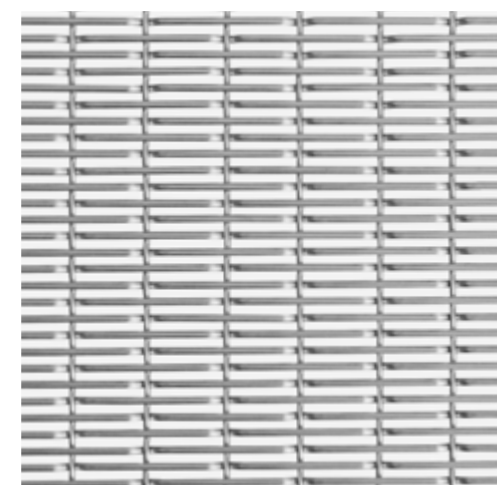
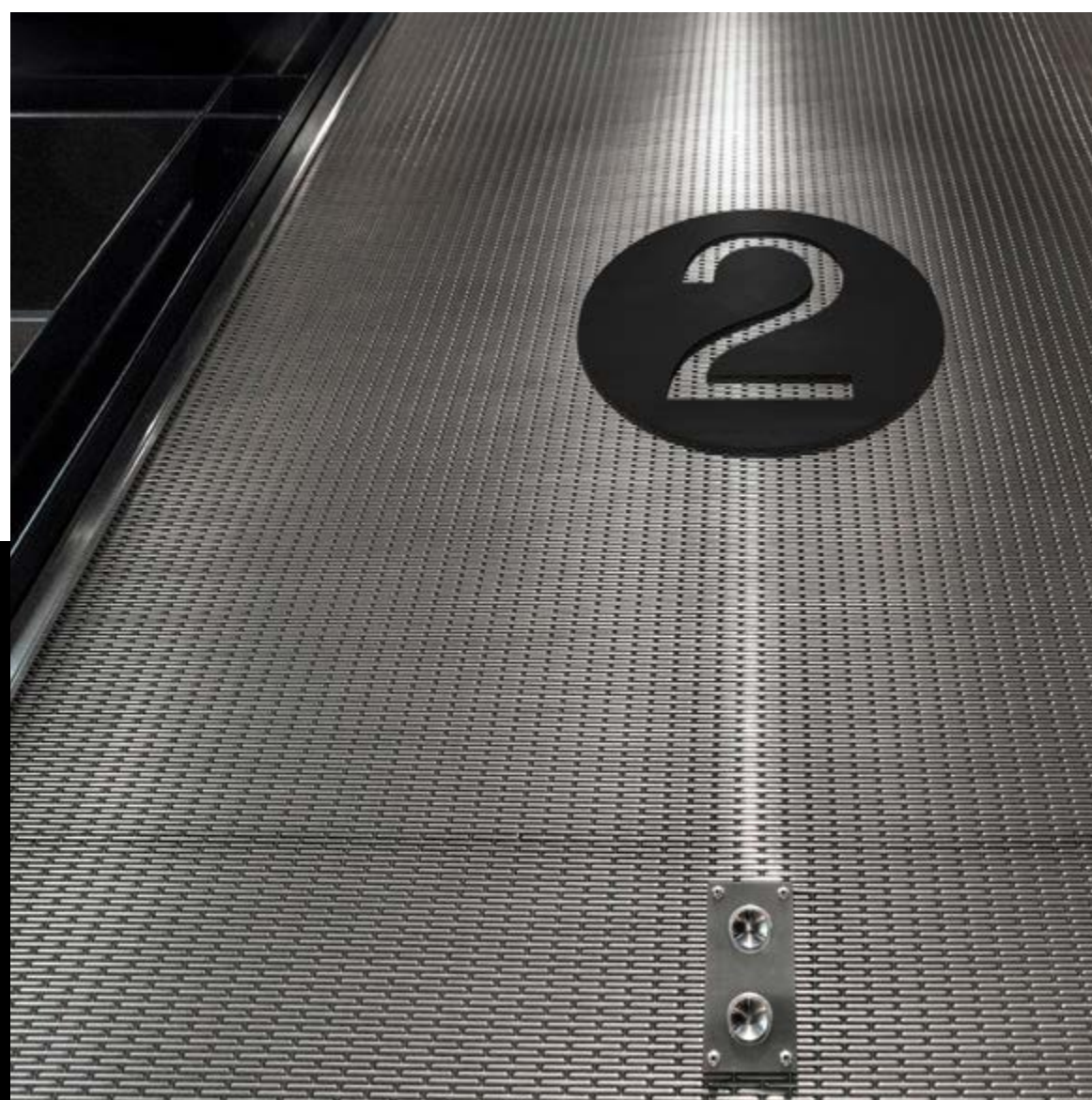
Location **Warsaw / POLAND**
Mesh **ARIES OL P01415**
Workshop **HRA Architekci**



Product: woven steel
mesh ARIES OL P01415.
ASTRO product line.

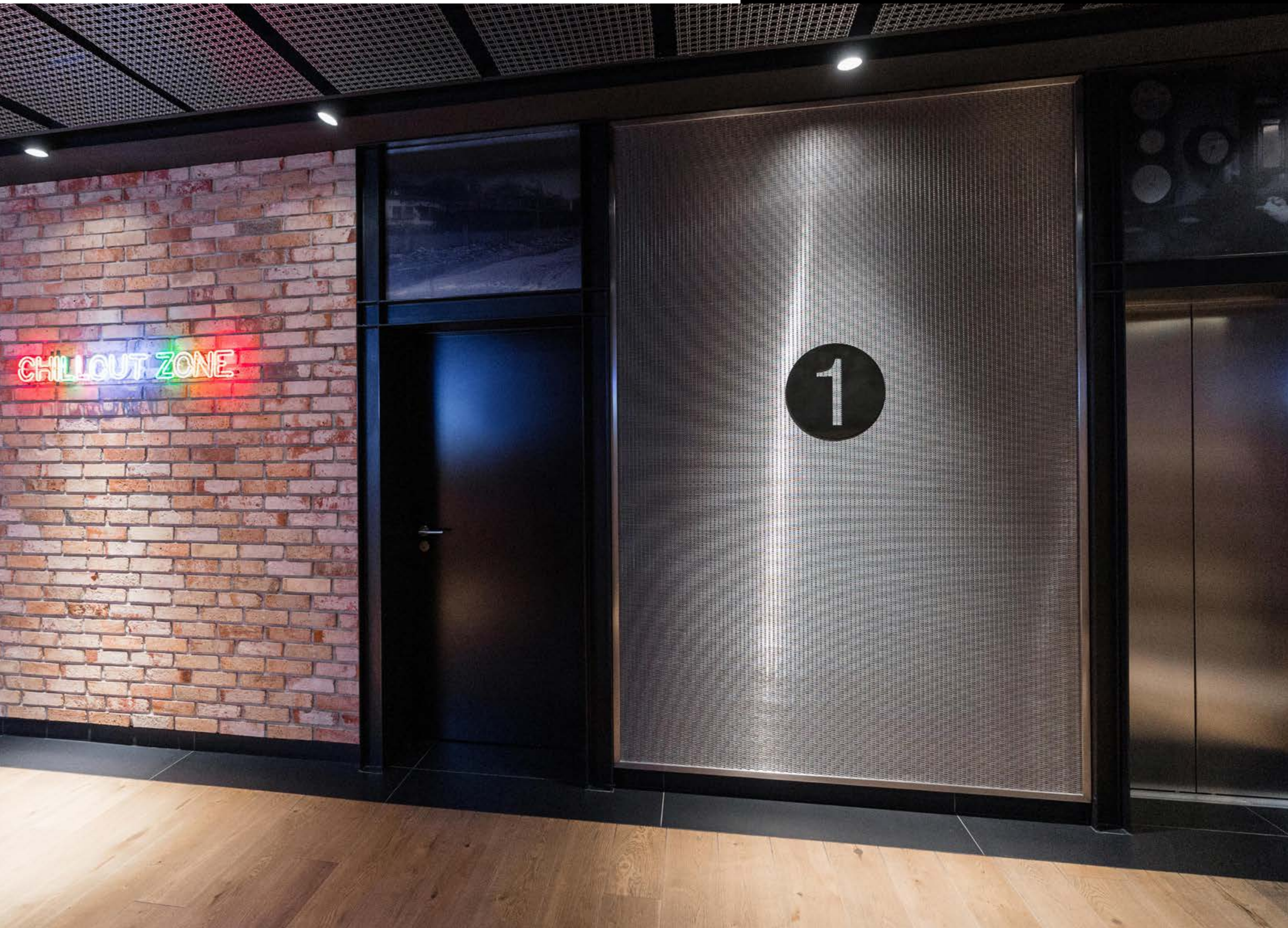


Powiśle Power station



Product: woven steel
mesh LEO P06030.
ASTRO product line.

Location **Warsaw / POLAND**
Mesh **LEO P06030**
Workshop **APA Wojciechowski Architekci**

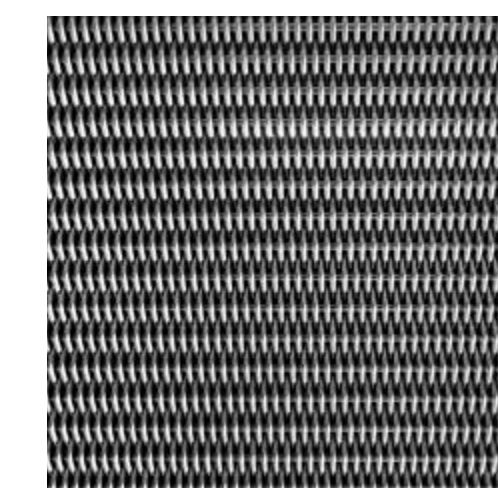




Kielce Trade Fairs

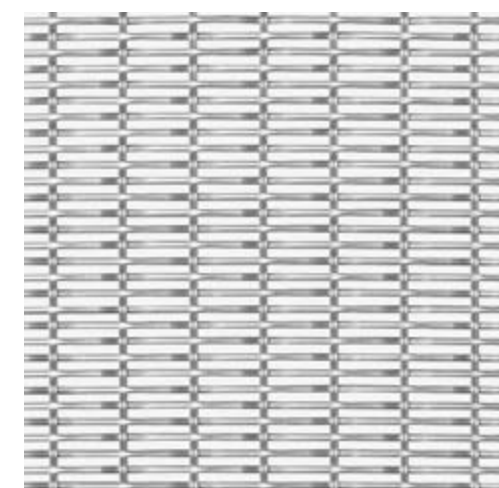
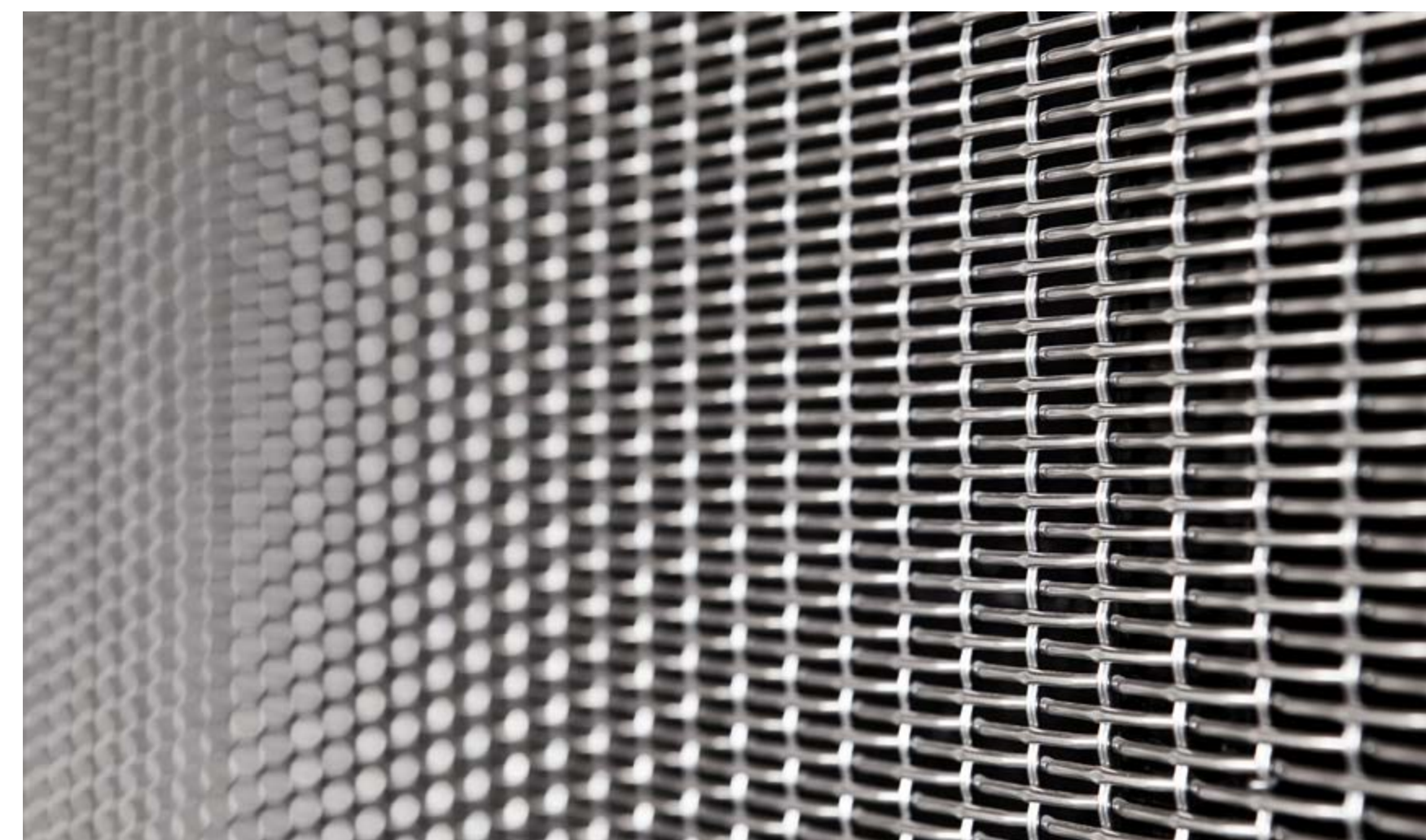
Location **Kielce / POLAND**
Mesh **EGIDA P14010**
Workshop **Bieńkowski Lis Mierzwa Architekci**

Prófil ~~utworzone~~ ~~z~~ ~~stal~~
mesh EGIDA P14010.
ASTRO product line.





Green Wings



Product: steel mesh
VIRGO P07020.
ASTRO product line.

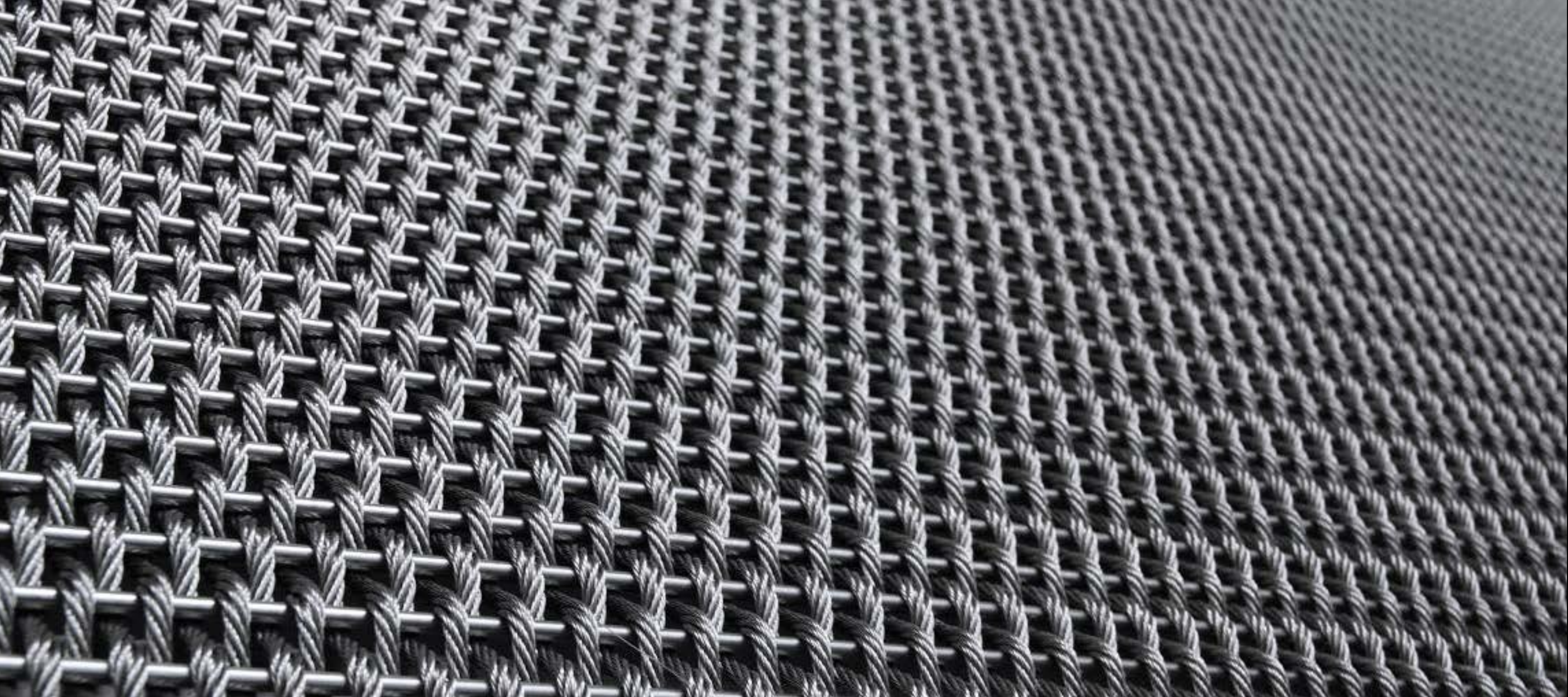
Location **Warsaw / POLAND**
Mesh **VIRGO P07020**
Workshop **JEMS Architekci**

The Park Warsaw

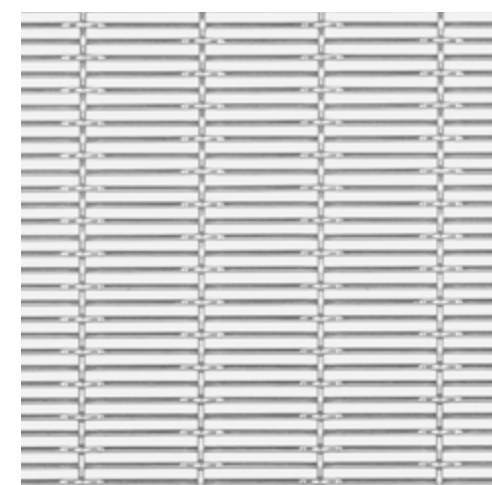
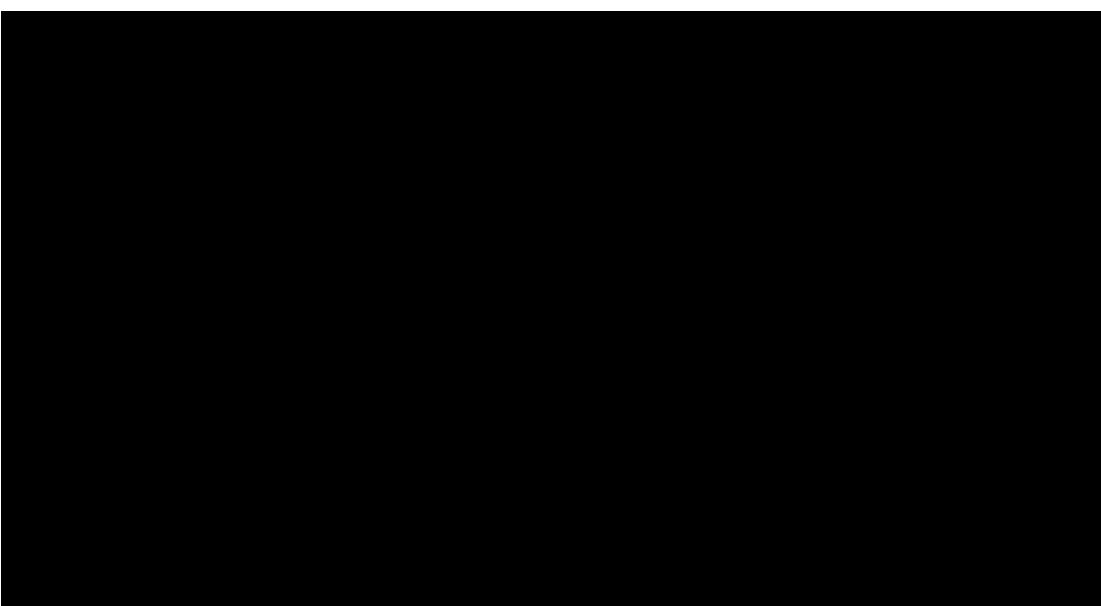
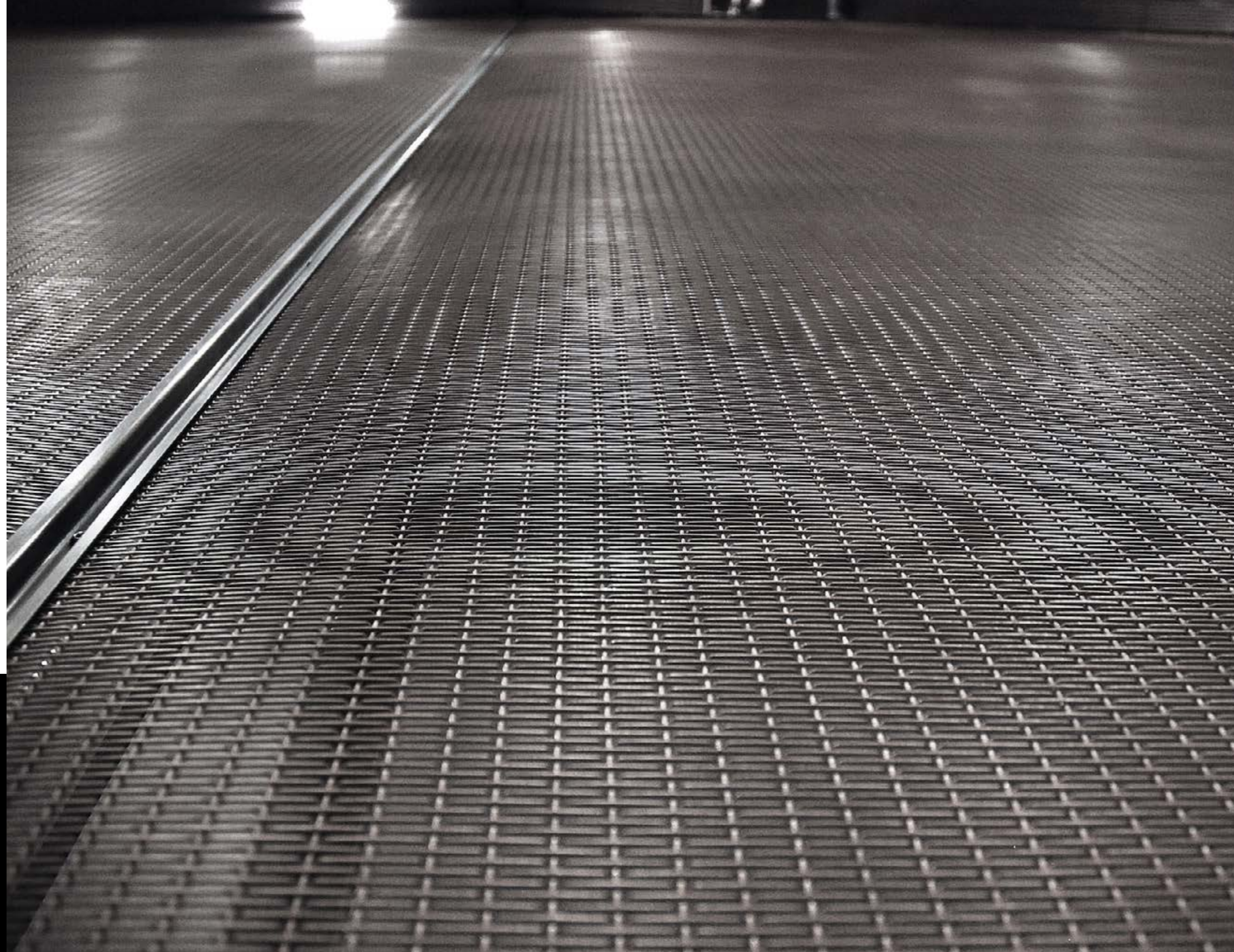
Location **Warsaw / POLAND**
Mesh **OBERON P18150**



Product: woven steel mesh OBERON P18150. ASTRO product line.



POLIN Museum of the History of Polish Jews



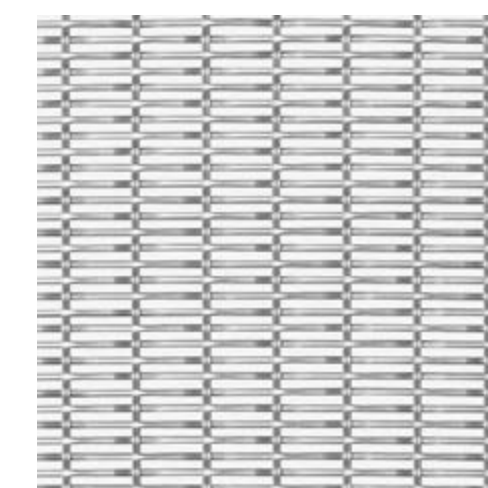
Product: steel mesh
LEO P06040.
ASTRO product line.

Location **Warsaw / POLAND**
Mesh **LEO P06040**



Centre of Polish Pharmacy

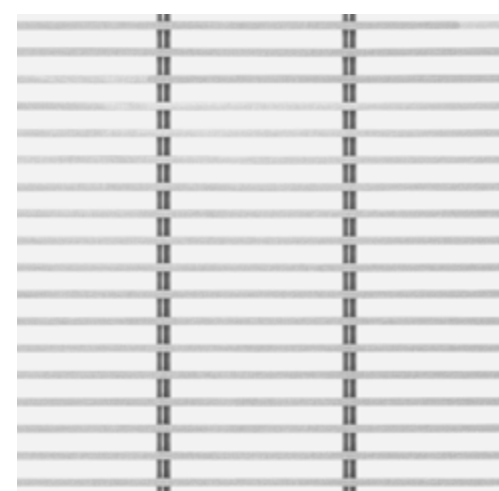
Location **Warsaw / POLAND**
Mesh **VIRGO P07020**



Product: steel mesh
VIRGO P07020.
ASTRO product line.

Lublin University of Technology

Location **Lublin / POLAND**
Grid **RADIUS Z07050**



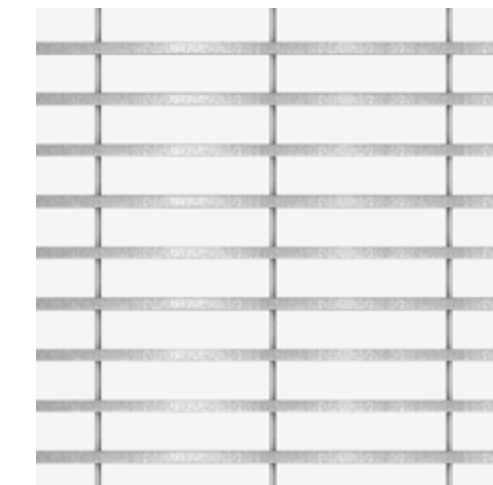
Product: steel grid
RADIUS Z07050.
SCREEN DECO product line.





AWF Katowice

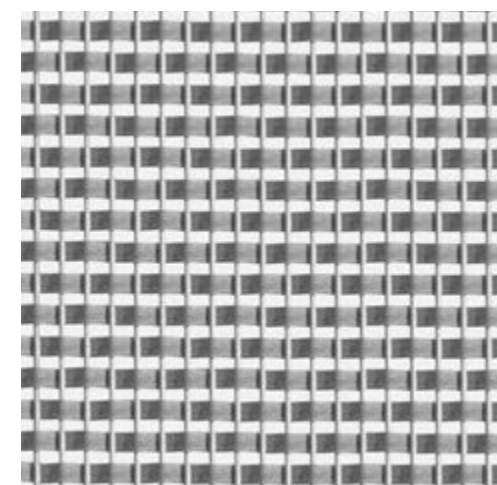
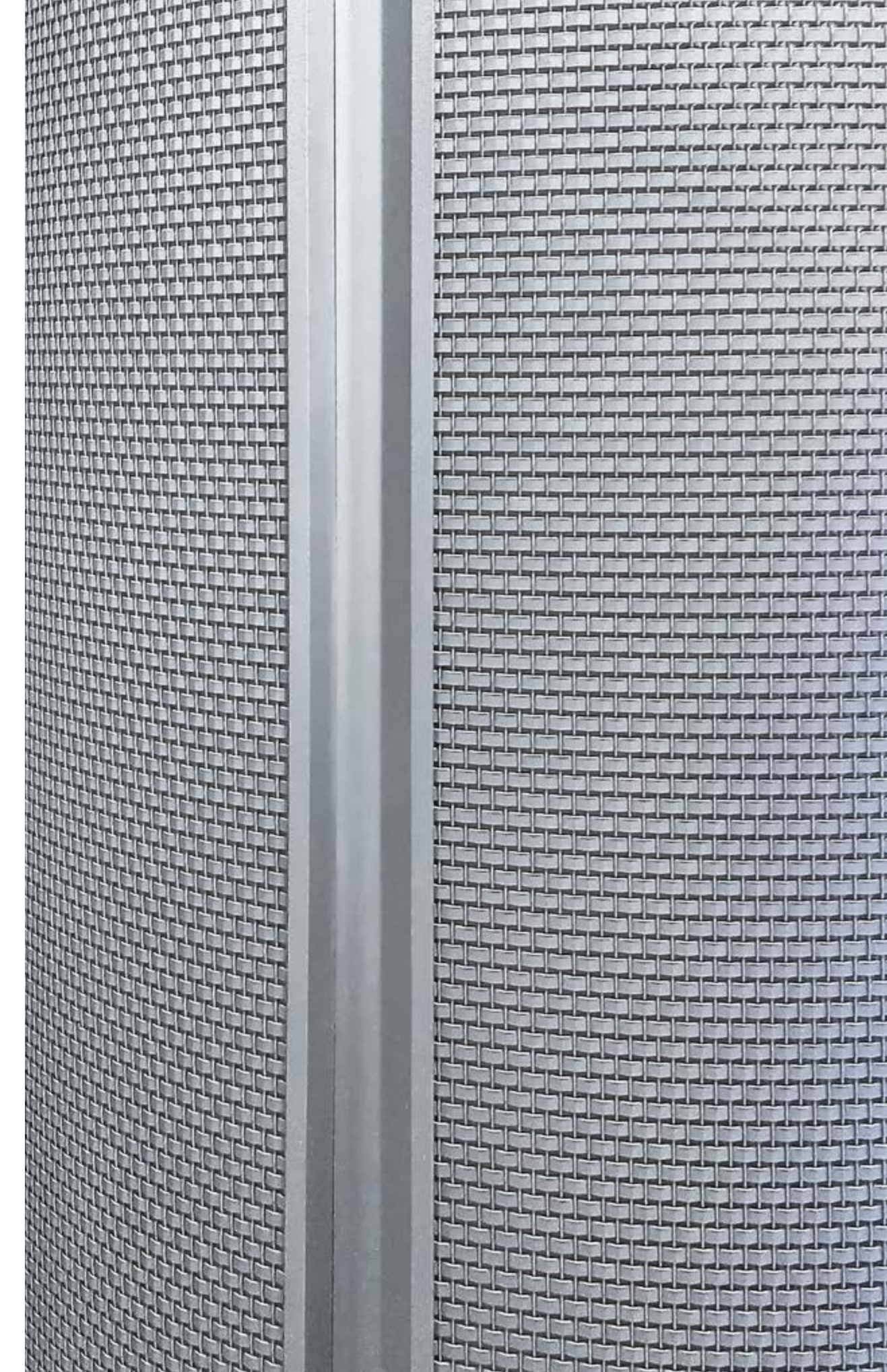
Location **Katowice / POLAND**
Grid **RADIUS Z10250**



Product: steel grid
RADIUS Z10250.
SCREEN DECO product line.



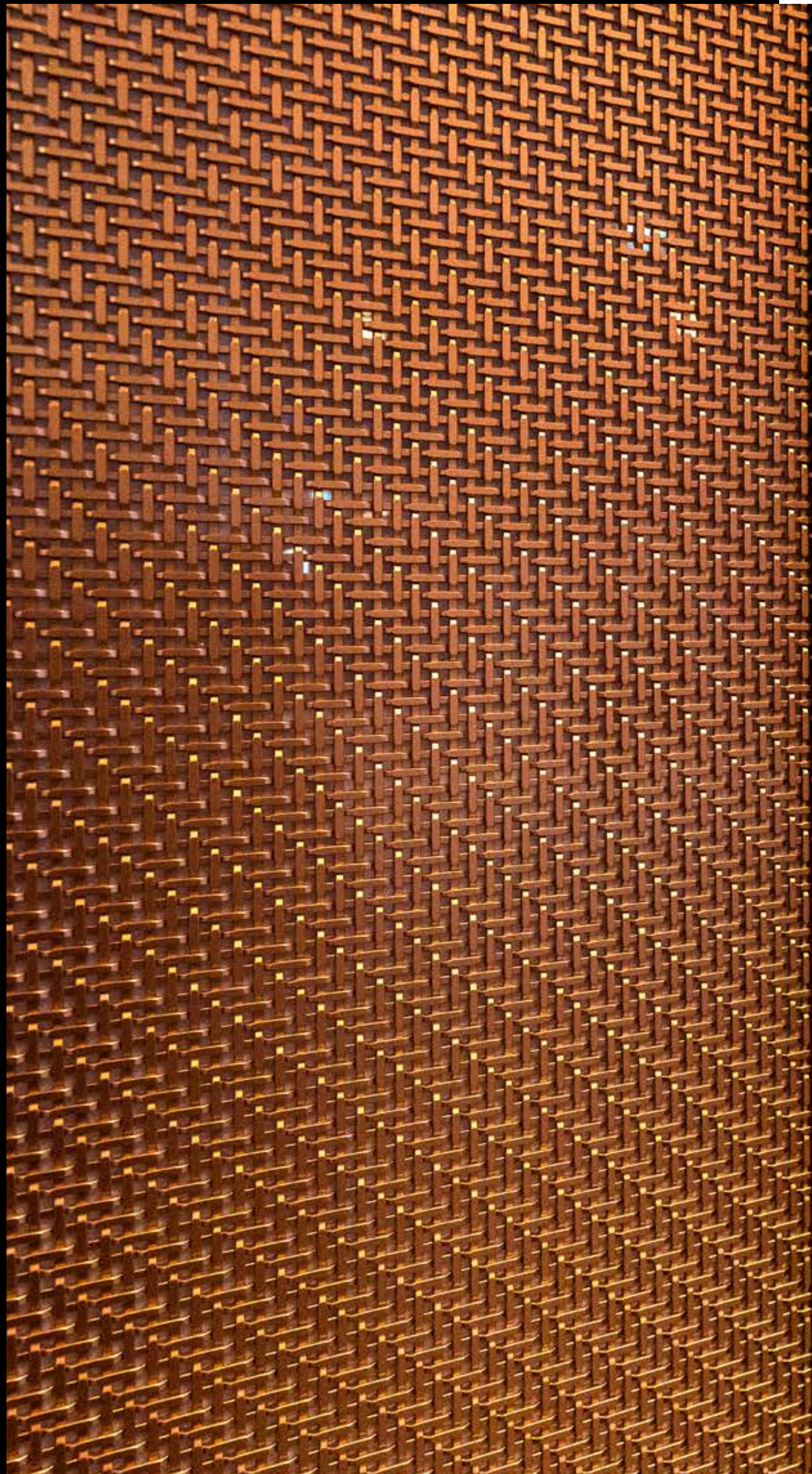
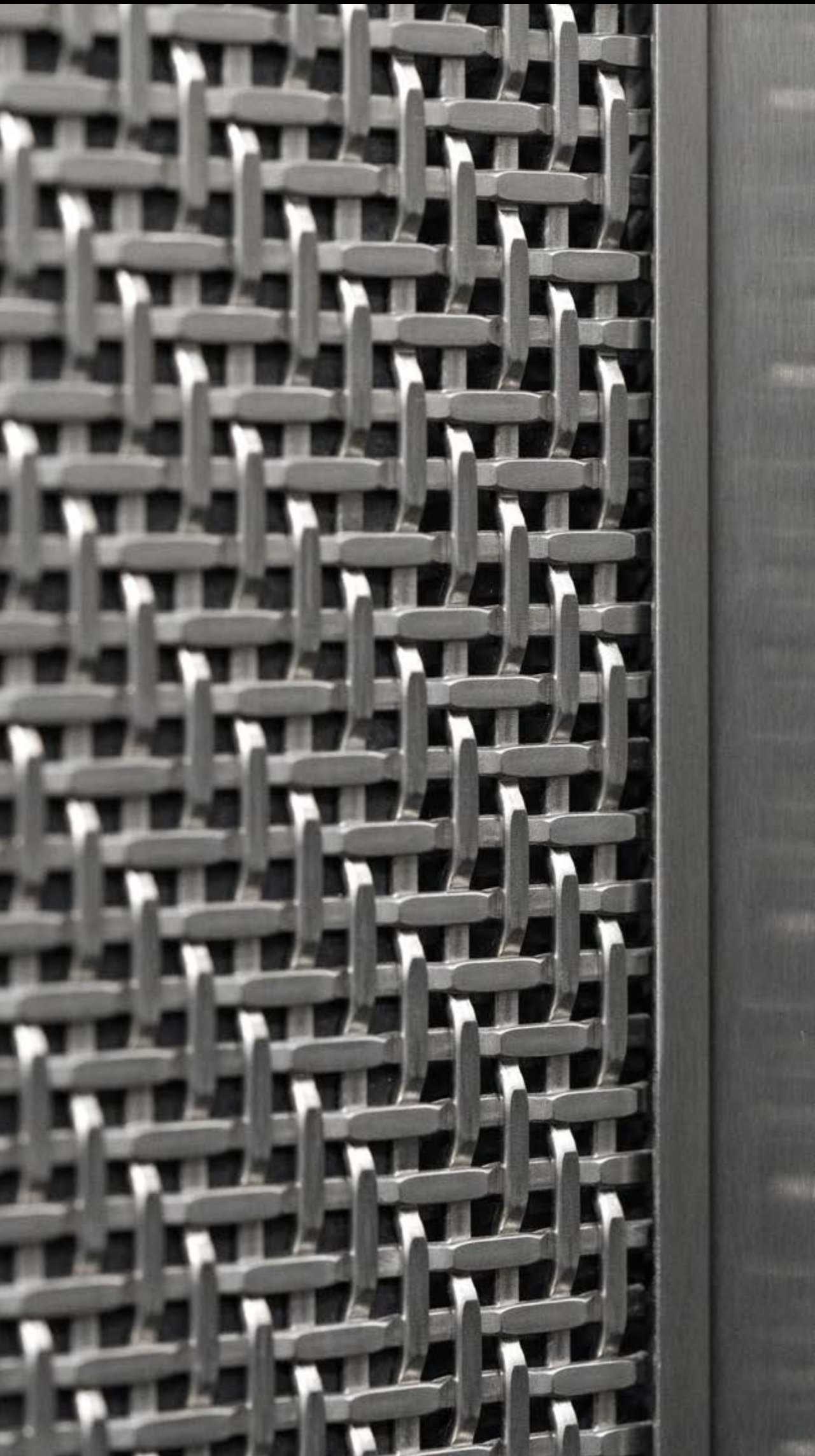
Printemps



Product: steel mesh
GEMINI P03375.
ASTRO product line.

Location
Mesh
Workshop

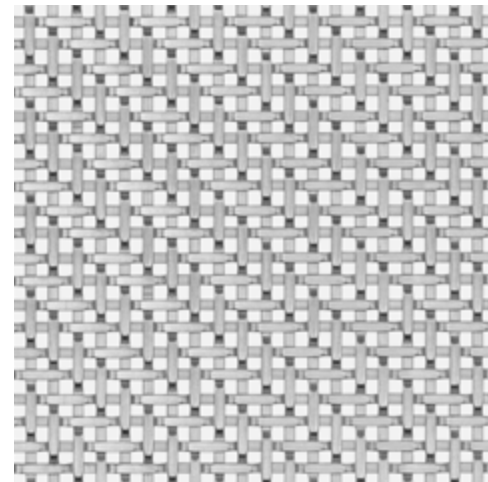
Paris / FRANCE
GEMINI P03375
Wilmotte & Associés Architectes



Varso Place lift

Location **Warsaw / POLAND**
Mesh **ARIES OL P01415**
Workshop **HRA Architekci**

Product: steel mesh
ARIES OL P01415.
ASTRO product line.

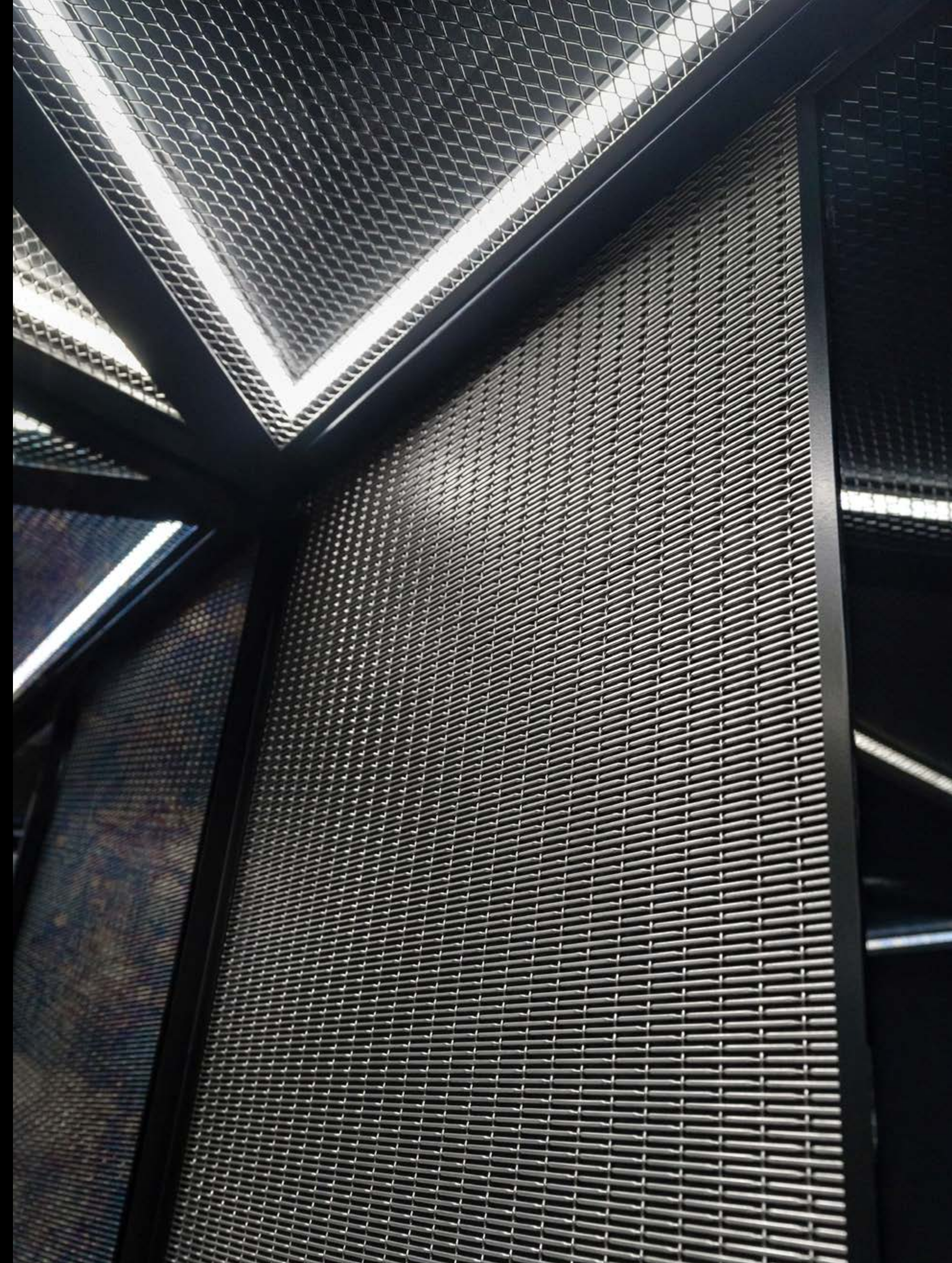
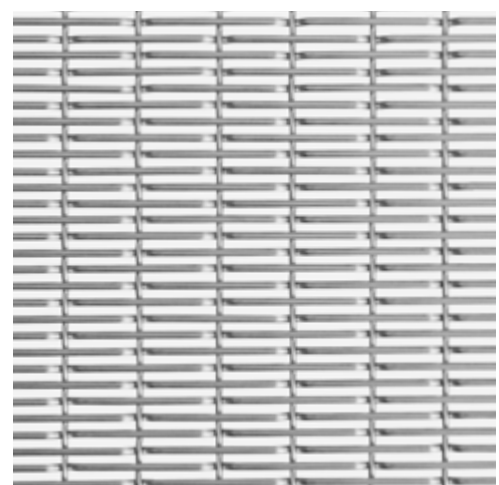


■ PROGRESS ARCHITECTURE

Elektrownia Powiśle lift

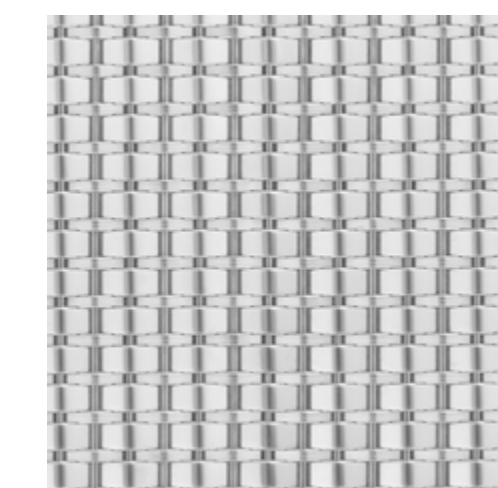
Location **Warsaw / POLAND**
Mesh **LEO P06030**
Workshop **APA Wojciechowski
Architekci**

Product: steel mesh
LEO P06030.
ASTRO product line.



Multico Residence

Location **Warsaw / POLAND**
Mesh **GEMINI P03320**



Product: steel mesh
GEMINI P03320.
ASTRO product line.



PROGRESS
ARCHITECTURE

progressarch.com